

LAFAVE LUXURY RESORT GUIDE

LAFAVE



LUXURY RENTALS
AT ZION



“BEAUTY IS NOT CAUSED. **IT IS.**”

EMILY DICKINSON



ZION NATIONAL PARK
THE SUBWAY

“WE CROWD INTO CITIES which shut out the rhythms of the planet—daybreak, high tide, wispy cirrus overhead yelling storm tomorrow, moonrise, Orion going south for the winter. Perceptions dull and we perceive a growing isolation from the earth.”

YVON CHOUINARD

ZION CAN RENEW WITHIN EACH OF US these natural rhythms blunted by the modern age. Here we can reconnect with a natural order and discover things that may have been forgotten.

LAFAVE
LUXURY RENTALS
AT ZION



ZION NATIONAL PARK
ANGELS LANDING



LAFAVE LUXURY RENTALS

LaFave is the ultimate destination for luxury accommodations while visiting Zion National Park.

LaFave is located in Springdale, Utah, the gateway town into Zion. LaFave sits only 1 mile from the south entrance to the main Zion Canyon, and features a Zion shuttle stop directly in front of the property.

LaFave is simply the nicest place to stay in Zion—you will not find better accommodations to visit the park. No expense was spared in these units, with top of the line finishes, appliances, and beds. For those who want the ultimate in luxury while visiting Zion, this is it.



LaFave rental units are very spacious: the average suite size is 1252 sq ft. LaFave units feature modern design and brand-new full size kitchens with stainless appliances and quartz countertops. The units include a dining table, walk-in tile showers, washer/dryer, private bedrooms, and a living room. Each unit in the complex includes a private patio or deck with stunning views of the soaring red sandstone cliffs of Zion.

LAFAVE

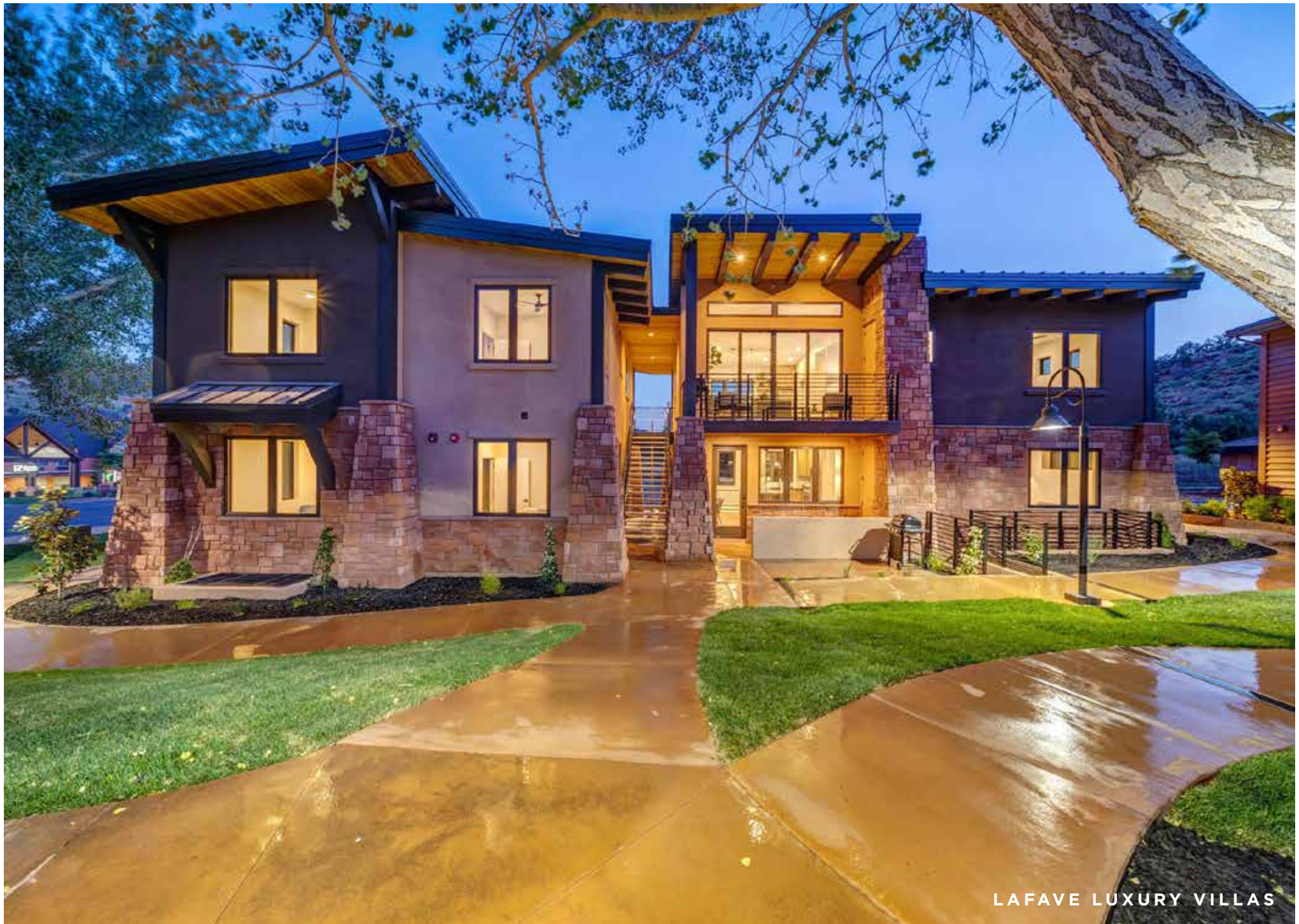
LUXURY RENTALS
AT ZION



LAFAVE LUXURY RENTALS
THE GALLERY HOUSE



LAFAVE LUXURY RENTALS
MYSTERY FALLS VILLA



LAFAVE LUXURY VILLAS



LAFAVE LUXURY RENTALS
ECHO CANYON VILLA

TABLE OF CONTENTS

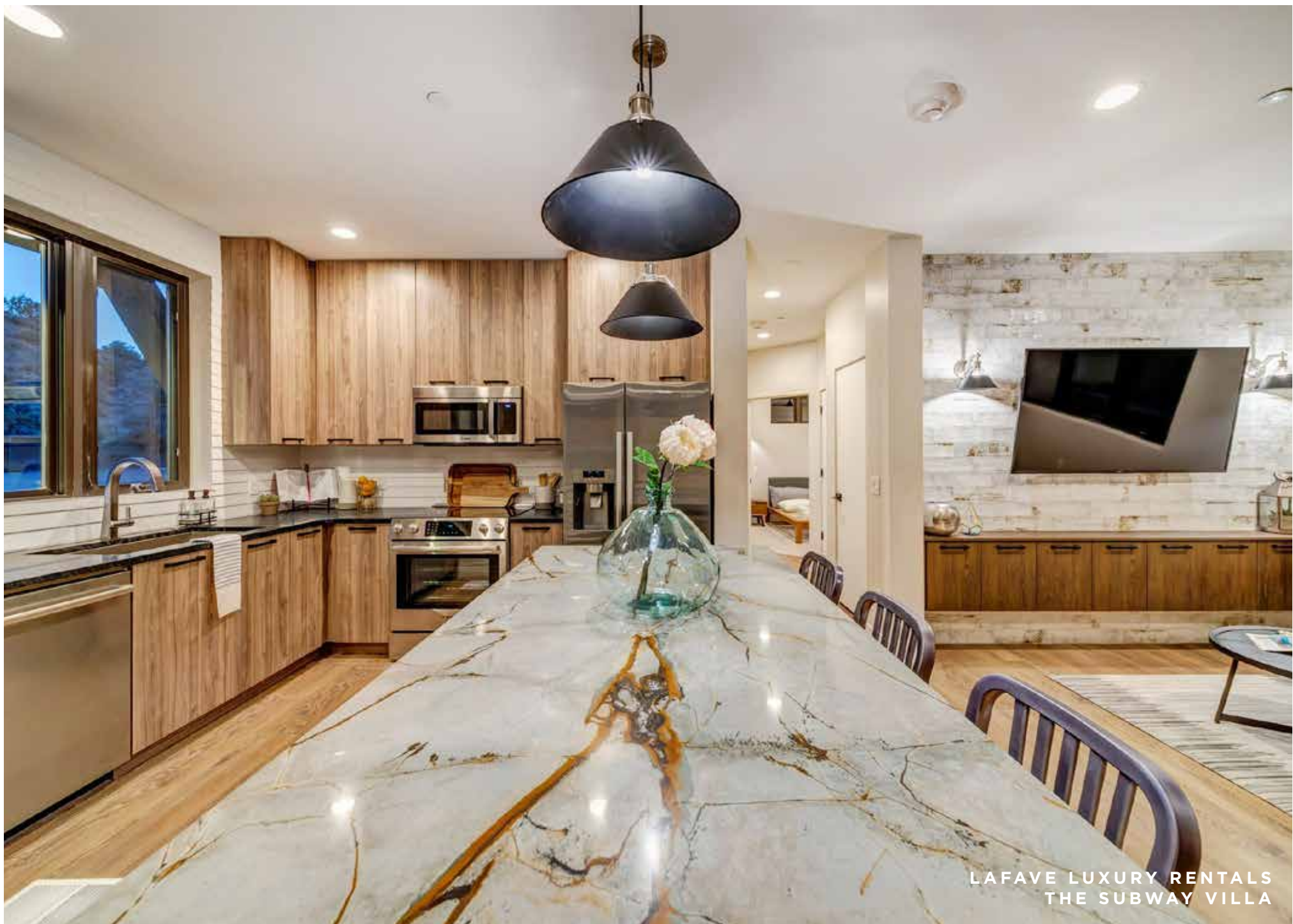
COVID-19 COMMITMENT	16
AMENITIES	17
PROPERTY MAP	32
ACCOMMODATIONS	33
LUXURY SUITES	34
LUXURY VILLAS	38
LUXURY HOMES	47
4 MAJOR ZONES IN ZION MAP	57
16 ZION HIKES WE RECOMMEND	58
SPRINGDALE UTAH OVERVIEW	62
SPRINGDALE SHOPS & GALLERIES	64
SPRINGDALE BEST RESTAURANTS	66





"It's not what you look at that matters, it's what you see."- Henry David Thoreau

ZION NATIONAL PARK
OBSERVATION POINT



LAFAVE LUXURY RENTALS
THE SUBWAY VILLA



LAFAVE

LAFAVE LUXURY RENTALS
THE GALLERY HOUSE

LAFAVE'S COMMITMENT

LaFave's commitment to you, our guests, as we navigate through Covid-19.



During these unprecedented times, we are committed to providing our guests a safe and enjoyable experience.

While LaFave has always received high marks for our meticulous attention to detail for cleanliness, we are now going above and beyond to make sure your stay is safe.

What we are doing:

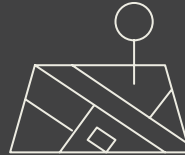
- Contactless check-in and check-out. As has always been the case at LaFave, we require no in-person check-in. Instead, we send our guests the code for their rooms prior to their stay. There is also no formal check-out procedure.
- As always, we continue to offer commercial-grade cleanings in-between stays.
- Our cleaners wear N-95 masks and gloves for all cleanings.
- We are using enhanced cleaning materials and procedures for high-touch areas to increase sanitization for each clean.
- We continue to wash all bath mats, kitchen towels, etc. between each stay.
- We provide a new kitchen dish cleaning brush for each new guest visit.
- We give extra attention to cleaning bathrooms and floors.
- We have removed the decorative pillows from the bedrooms.
- All public areas are regularly and thoroughly sanitized.
- You may cancel up until 1 week before your stay and receive a full refund.

Our new cleaning procedures build upon LaFave's already high standards of housekeeping and hygiene. If you check our reviews online, we have always stood out for receiving "sparkling-clean" status from the online booking sites.

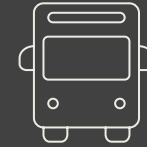
We take great pride in maintaining the highest standards of cleanliness and hygiene.



**XL SUITES:
1252 SQ FT AVG
SIZE UNIT**



**1 MILE
FROM ZION
ENTRANCE**



**ZION BUS
STOP DIRECTLY
IN FRONT**



**NO CHECK-IN
REQUIRED**
(we send you a door code)



**FULL-SIZE
KITCHEN**



**WASHER &
DRYER**

LAFAVE AMENITIES

LAFAVE
LUXURY RENTALS
AT ZION



**WALKING DISTANCE
TO 4 GREAT
RESTAURANTS**



**PRIVATE OUTDOOR
DECK/PATIO WITH
GRILL**



**WIRELESS
INTERNET &
SMART TVS**



FREE PARKING



**KEURIG
COFFEE
MACHINE**



**LUXURY RESORT
SO YOU CAN
RECHARGE**

AMENITIES



LaFave is luxury: you can recharge at LaFave after a long day of touring in Zion. Many of our guests have commented, “This is the nicest vacation rental we have ever stayed in.”

LOCATION

- Close to the main Zion south entrance (only 1 mile away)
- Free Zion bus shuttle stop directly in front of LaFave: no Zion parking worries. Leave your car parked for free at LaFave.
- Easy walking distance to 4 great restaurants
- State liquor store is across the street

INTERIOR DESIGN

- Extra large suites: the average hotel room is 330 sq ft — the average LaFave suite size is 1252 sq ft
- Modern design/furnishings: suites feel fresh, nice, and new
- Patio or deck with every unit + outdoor cooking grill
- Private bedrooms and open living rooms in all our suites
- Luxurious walk-in tile showers with European glass doors in our Villas & Luxury Homes
- Many large windows and high ceilings make our units feel light and airy
- Plush towels, hair dryer, shampoo, conditioner, soap
- High-quality mattresses and luxury linens

CHEF-READY FULL KITCHENS

- Full kitchen: oven, refrigerator, dishwasher, microwave; stainless Bosch appliances featured in our Villas & Luxury Homes
- Kitchen is fully stocked for cooking (full set of pans, cookware, utensils, dinnerware, etc.)
- Chef-ready kitchens include basic cooking supplies (olive oil, balsamic, spices)
- Dazzling quartz island bar/counters; custom cabinetry
- Dining table in every unit

LUXURY SERVICES

- No check-in required (we send you a door code)
- Full size washer/dryer in every unit + laundry pods
- Keurig machine with Starbucks coffee, teas & hot chocolate
- Wireless internet
- Smart TV's in every unit
- Brita filtered water



KITCHEN:

Coffee / Drinks

- Keurig coffee maker
- Starbucks pods
- Herbal tea selection & hot chocolate
- Sweetener and creamer
- Coffee mugs
- Filtered water

Kitchen Tools / Utensils

- Outdoor grill
- Full set of dishes & glasses
- Full set of pots & pans + cookware
- Toaster
- Blender
- Full set of utensils
- Full knife set & cutting boards
- Mixing bowls
- Pyrex containers

Cooking Oils / Spices

- Olive oil
- Balsamic vinegar
- Salt & Pepper
- Large variety of spices

Kitchen Cleaning / Soaps

- Kitchen dishtowels
- Dishwasher pods (dishwasher soap)
- Kitchen sponge (brand-new w/ each stay)
- Dish soap
- Paper towels



BATHROOM:

- Bath towels, washcloths, hand towels
- Shampoo, conditioner, body wash, hand soap
- Lotion
- Hair dryer
- Clothes steamer
- Kleenex and toilet paper



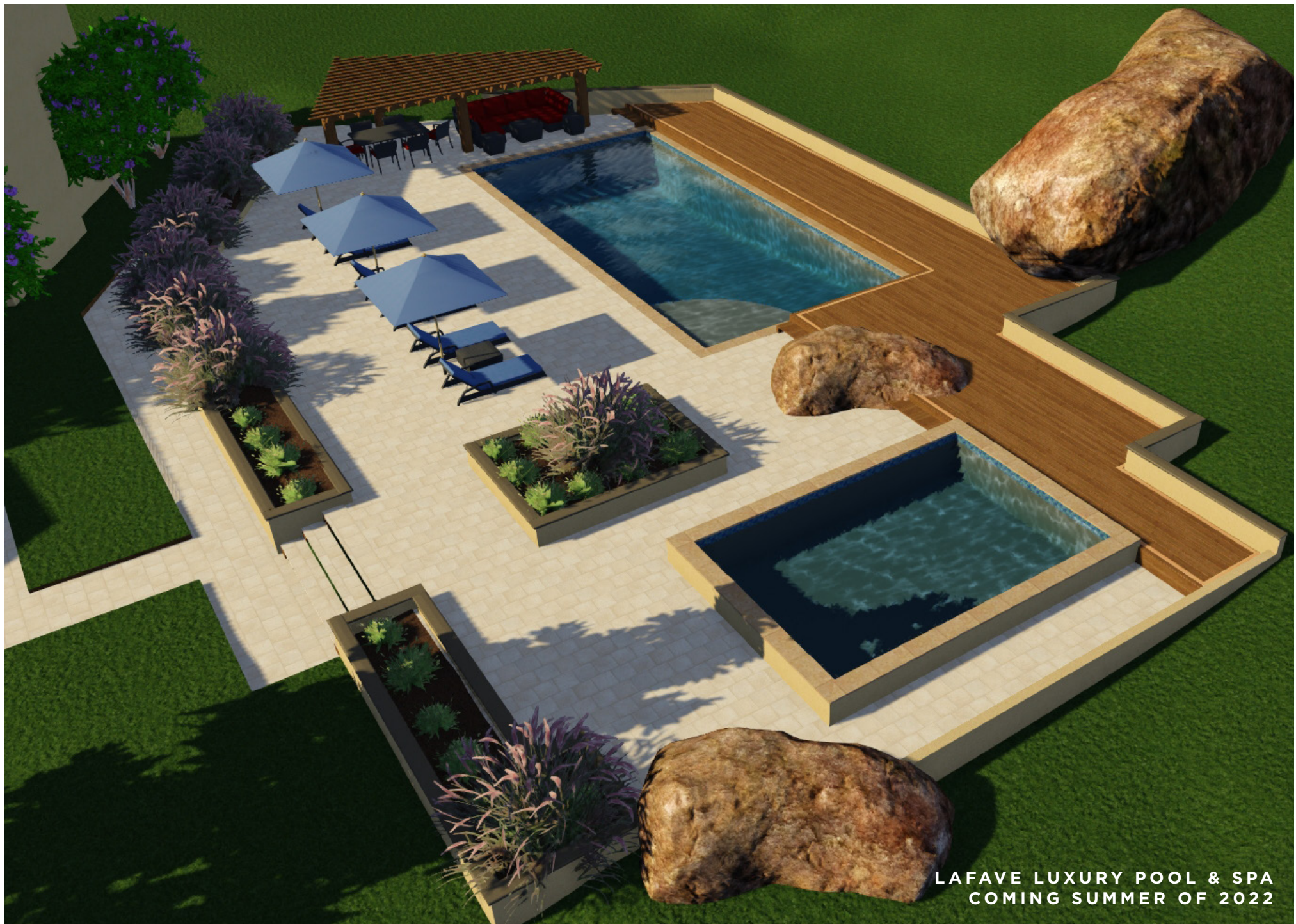
WASHER/DRYER:

- Tide pods (laundry soap) & dryer sheets



WIFI/ENTERTAINMENT:

- Wi-Fi: Login & password located on refrigerator
- Smart TV to access your own streaming account
e.g. Netflix, Amazon Prime Video, Disney+, Hulu,
YouTube, YouTube TV, etc.
- A few board games are also included in each suite
for your enjoyment



LAFAVE LUXURY POOL & SPA
COMING SUMMER OF 2022





1 LAFAVE LUXURY RENTALS - Located in the heart of Springdale — gateway town to Zion

2 ZION NATIONAL PARK - 1 mile from LaFave

LAFAVE
LUXURY RENTALS
AT ZION

book at lafavezion.com / (435) 632-3667 / 1214 Zion Park Blvd. / Springdale, Utah



“Zion is the most impressive exposure of Navajo sandstone in the world.”

- Rachel Ross, Canyoneer, Geologist

ZION NATIONAL PARK
THE NARROWS

No matter
the
motivation,
we can all
agree Zion
is a special
place.

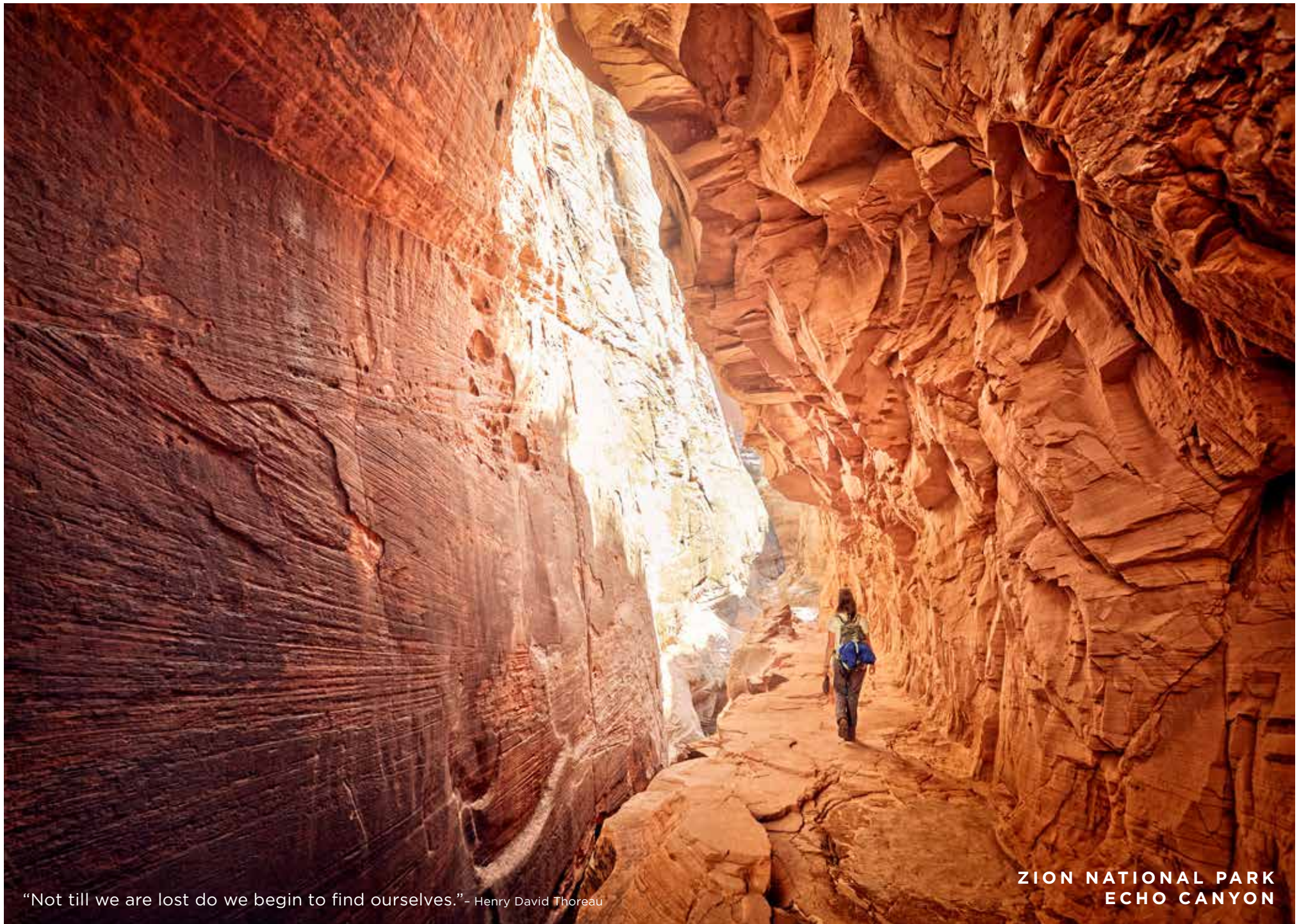
We all come to Zion and the American West for different reasons. Some come for the freedom of the open wilderness, others to view unsurpassed beauty; some come to reconnect with family and friends; while others simply come to recharge.

Zion Canyon is unquestionably one of the most beautiful red rock canyons in the world (many would argue it is the standard by which all other desert canyons are measured).



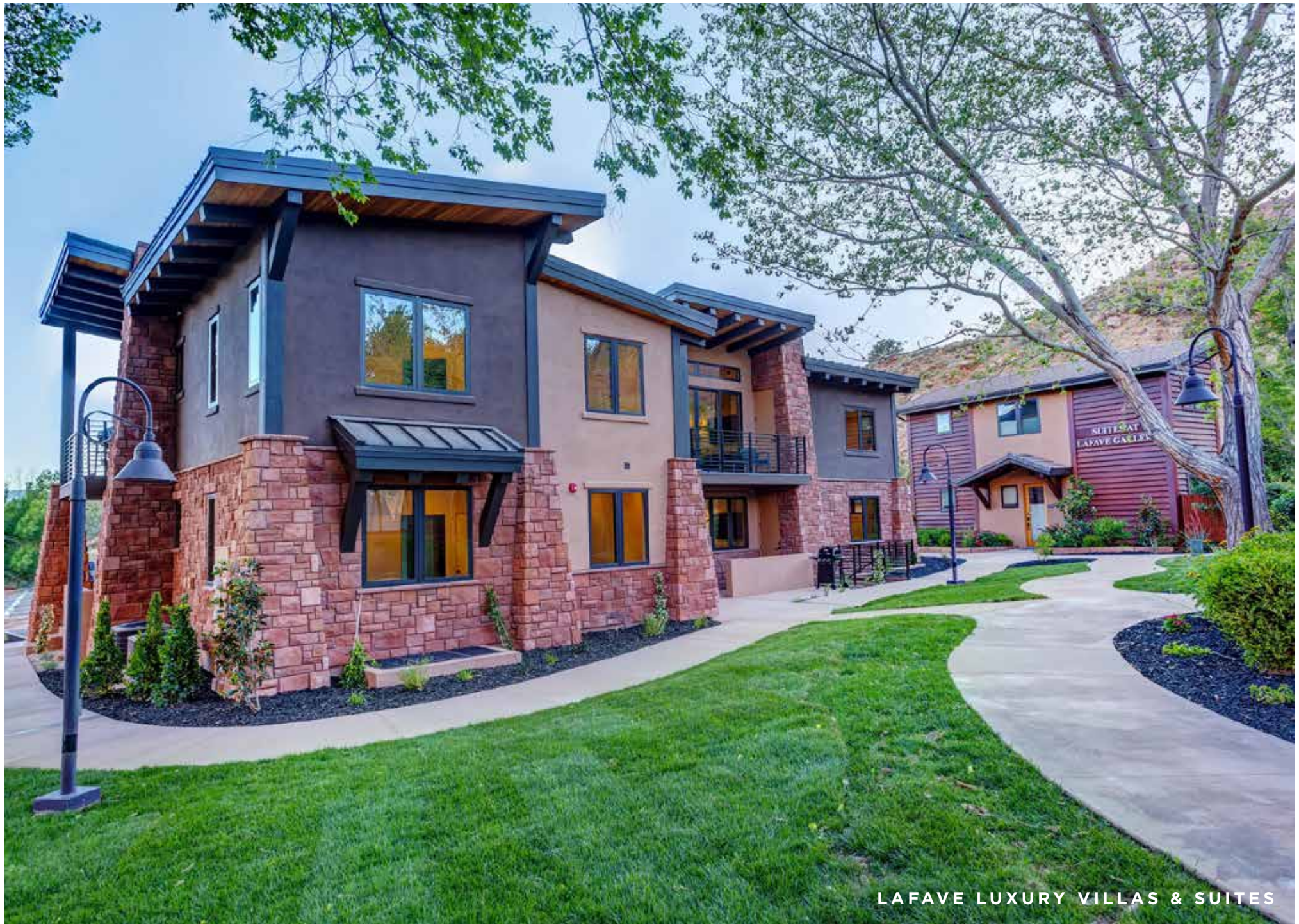
Millions come to Zion each year to be renewed and to gaze in wonder at the beauty of these canyon walls and majestic mountains.

Zion's importance, against the backdrop of our busy, noisy, often violent world, is to remind us that we can in fact make other choices: we can align ourselves with that which is slower, more peaceful, closer to nature, and our own true selves. The simple beauty that can be found here affirms that less is more.



"Not till we are lost do we begin to find ourselves."- Henry David Thoreau

ZION NATIONAL PARK
ECHO CANYON



LAFAVE LUXURY VILLAS & SUITES

LAFAVE: HERITAGE OF THE LAND

On our property at LaFave, we have a well-kept pioneer stone corral that runs along our property boundary. We have preserved this piece of history as a way to honor these early settlers.

The land around Zion has a rich history. At LaFave, we are proud that our property carries a heritage of the rugged American West and pioneer spirit.

In 1862, the early pioneers of Zion carved a difficult existence out of the desert landscape with few tools and materials.

Before there was barbed wire fencing, the pioneers of Utah would construct stone corrals to contain their animals. In several of the national parks in Utah, you may still see remnants of these early stone fences.

**EARLY PIONEER STONE CORRAL
CONSTRUCTED BY HAND THAT LIES
ON THE LAFAVE PROPERTY**



LAFAVE LUXURY RENTALS
ECHO CANYON VILLA



LAFAVE LUXURY RENTALS
DECK VIEW FROM ECHO CANYON VILLA

REVIEWS



“Best Airbnb we’ve ever stayed in.”



“This place lived up to the hype. I would stay here again.”



“I want to remodel my house to look like the LaFave Gallery House. This place is awesome!”



“LaFave exceeded expectations. Honest, friendly, and informative. They gave us great advice of what to see. And our suite was so amazing! Large modern rooms, very clean upon arrival, the kitchen was fully stocked, plus really nice beds.”



“Super-clean rooms.”



“LaFave is the perfect base camp for visiting Zion. We will for certain stay here again.”

LAFAVE PROPERTY MAP

LAFAVE

LUXURY RENTALS
AT ZION

PROPERTY MAP KEY

BUILDING A - LUXURY HOMES

West Temple House
Bridge Mountain House
The Gallery House (entire building)

BUILDING B - LUXURY SUITES

The Zion Suite
The Watchman Suite

BUILDING C - LUXURY VILLAS

Angels Landing Villa
The Subway Villa
Echo Canyon Villa
Mystery Falls Villa

BUILDING D - LUXURY VILLAS

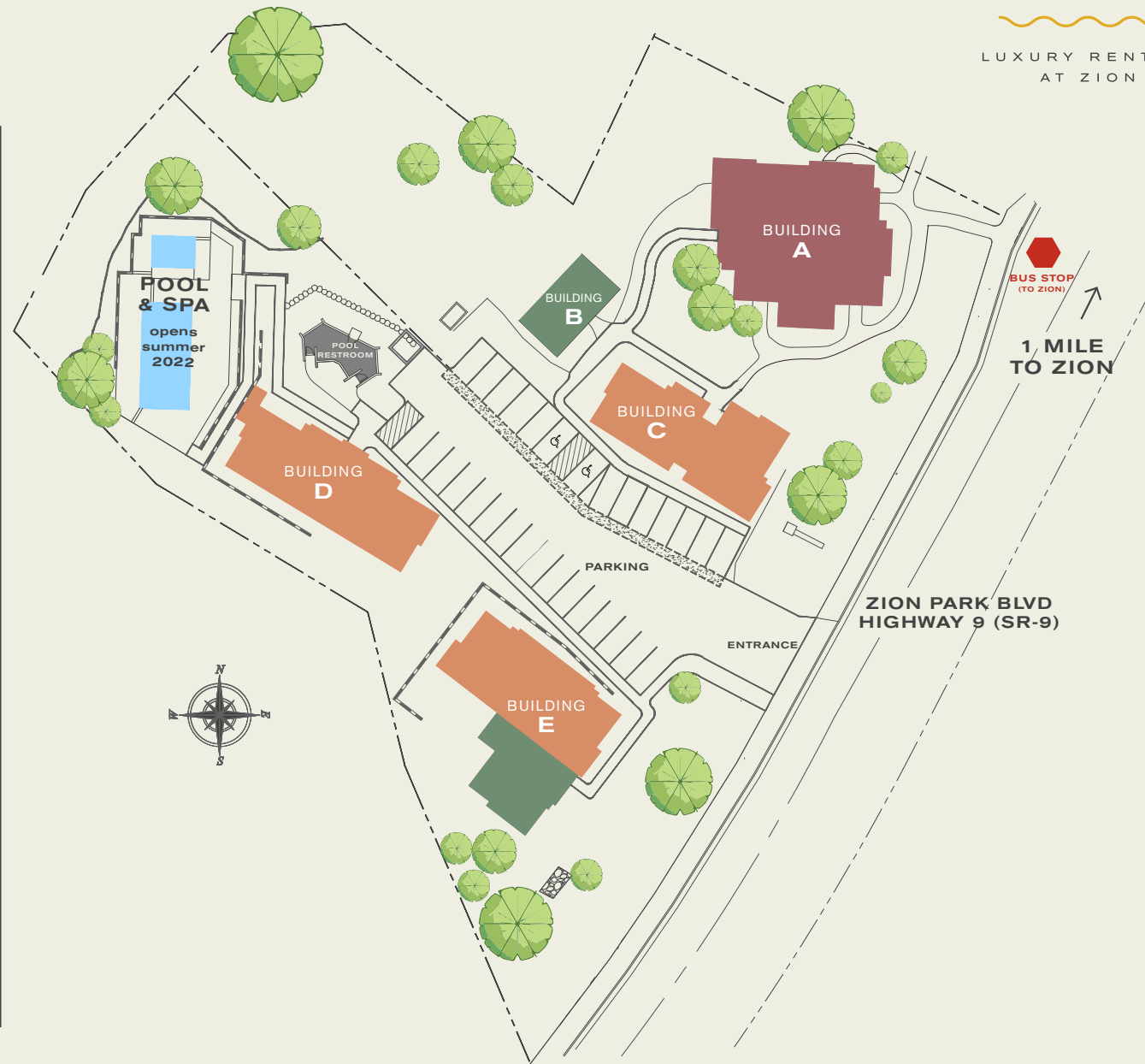
The Narrows Villa
Emerald Pools Villa
Checkerboard Mesa Villa
Mountain of the Sun Villa

BUILDING E - LUXURY VILLAS

Hidden Canyon Villa
Orderville Canyon Villa
Kolob Arch Villa
Northgate Peaks Villa

BUILDING E - LUXURY SUITES

The Sentinel Suite
Temple of Sinawava Suite



ACCOMMODATIONS



LUXURY SUITES

Luxury Suite

- full kitchen
- 1 king bed
- 1 queen sofa bed
- 772 sq ft
- capacity: 2-4



LUXURY VILLAS

Deluxe Villa - 2 bedroom

- full kitchen
- 1 king bed, 1 queen bed
- 1 queen sofa bed
- 1,004 sq ft
- capacity: 2-6

Grand Villa - 2 bedroom

- full kitchen
- 2 bedrooms + bonus/game room
- 1 king bed, 1 queen bed
- 2 queen sofa beds
- 1,472 sq ft
- capacity: 4-8

Premier Villa - 3 bedroom

- full kitchen
- 3 bedrooms + bonus/game room
- 1 king bed, 3 queen beds
- 1 queen sofa bed
- 1,848 sq ft
- capacity: 4-10



LUXURY HOMES

Premium Luxury House - 3 bedroom

- full kitchen
- 6 beds: 3-queen, 3-full
- 1308 sq ft
- capacity: 4-8

Executive Luxury House - 3 bedroom

- full kitchen
- 8 beds: 1-king, 2-queen, 5-full
- 1920 sq ft
- capacity: 4-10

Presidential Luxury House - 6 bedroom

- full kitchen
- 14 beds: 1-king, 5-queen, 8-full
- 3228 sq ft
- capacity: 6-16

LUXURY SUITES

LAFAVE



LUXURY RENTALS
AT ZION



LAFAVE LUXURY RENTALS
THE WATCHMAN SUITE

LUXURY SUITES

LUXURY SUITE This one bedroom apartment style suite with all the comforts of home is great for a couple or small family. With a private bedroom, full kitchen, dining table, walk-in tile shower, washer/dryer, and living room with sofa bed. Includes a private patio with amazing Zion views. Please see amenities pages 16-20 for full list of LaFave offerings.

THE WATCHMAN SUITE

1



BEDROOM

1



BATHROOM

1



KING BED

1



SOFA BED

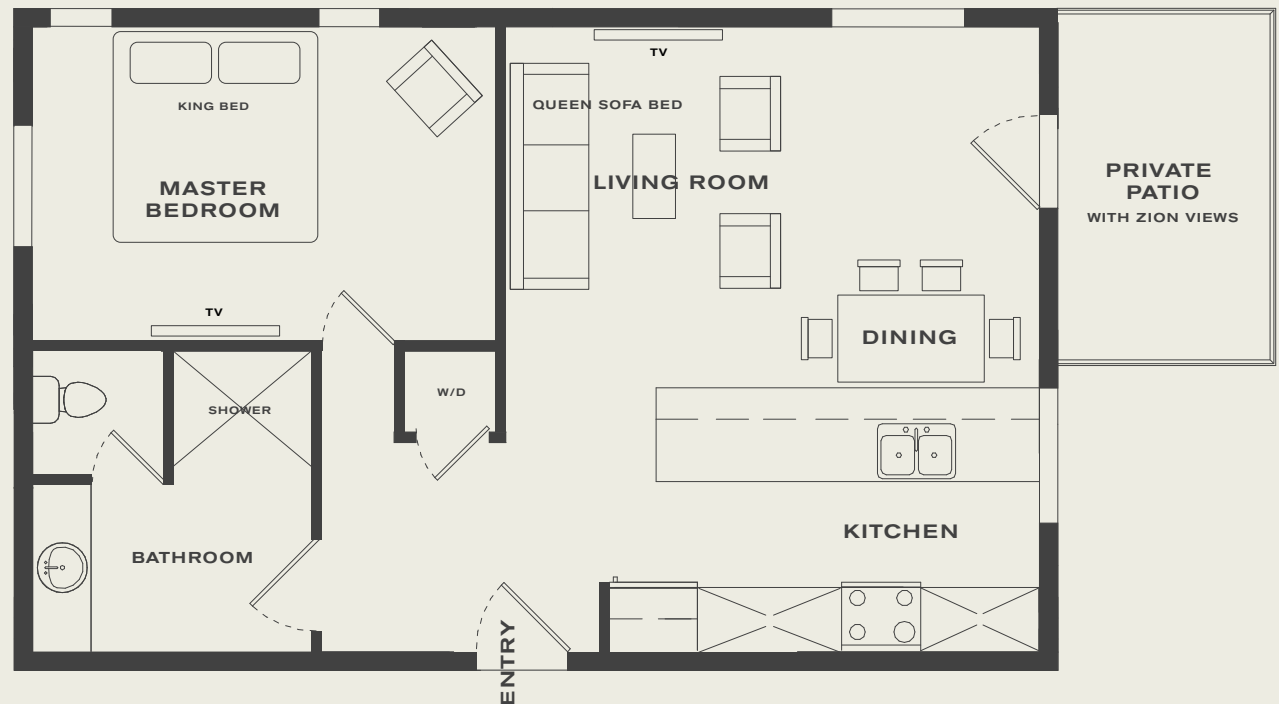
772
SQ FT

2-4
CAPACITY



THE WATCHMAN SUITE




Unit 1 / Main Level



LUXURY SUITES

LUXURY SUITE This one bedroom apartment style suite with all the comforts of home is great for a couple or small family. With a private bedroom, full kitchen, dining table, walk-in tile shower, washer/dryer, and living room with sofa bed. Includes a private deck with amazing Zion views. Please see amenities pages 16-20 for full list of LaFave offerings.

ZION SUITE

1	1	1	1
			
BEDROOM	BATHROOM	KING BED	SOFA BED

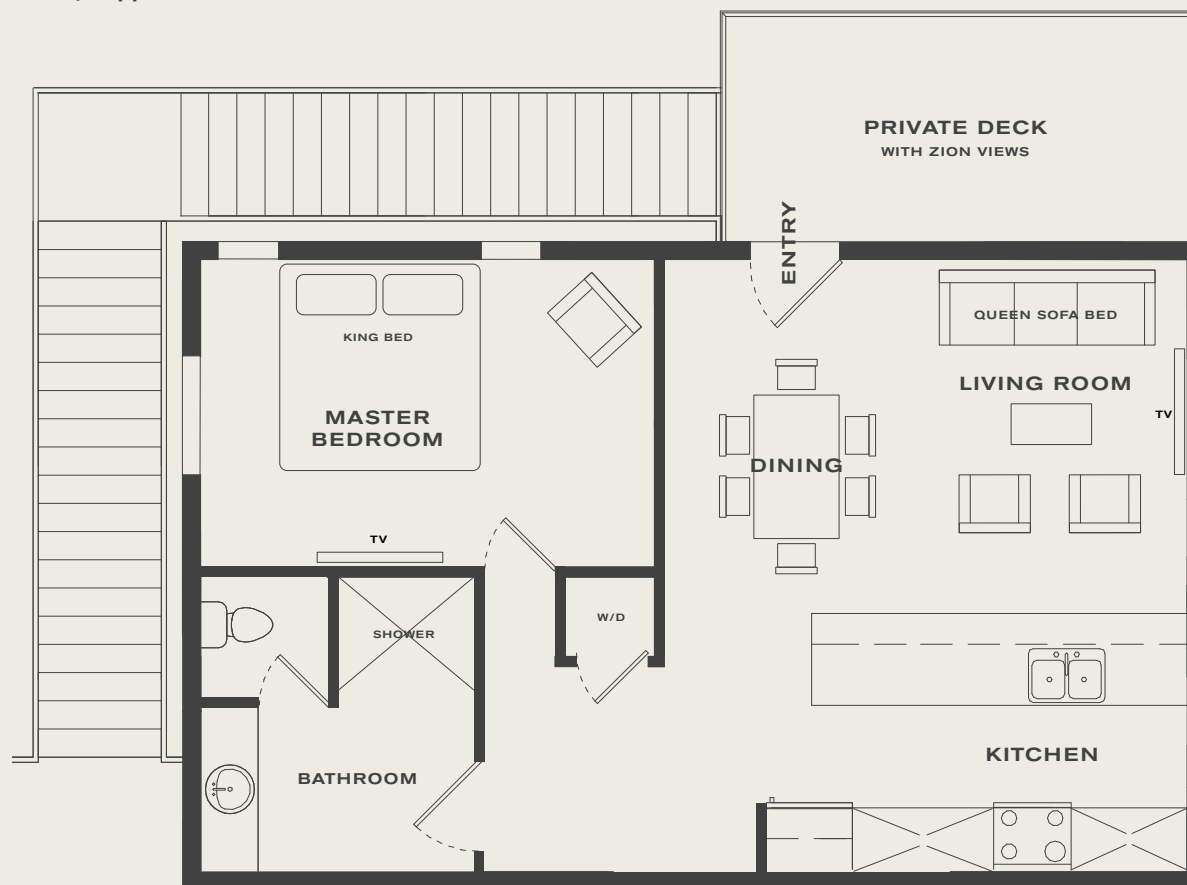
772
SQ FT

2-4
CAPACITY



ZION SUITE

Unit 2 / Upper Level



LUXURY VILLAS

LAFAVE



LUXURY RENTALS
AT ZION



LAFAVE LUXURY RENTALS
ECHO CANYON VILLA

LUXURY VILLAS

DELUXE VILLA This two bedroom apartment style villa is perfect for one or two couples, or a family. Includes 2 private bedrooms, 2 bathrooms, full size kitchen, dining table, walk-in tile showers, washer/dryer, and living room with sofa bed. Includes a private covered deck with amazing views. Please see amenities pages 16-20 for full list of LaFave offerings.

MYSTERY FALLS VILLA

NEW VILLA
OPENED JUNE 2020

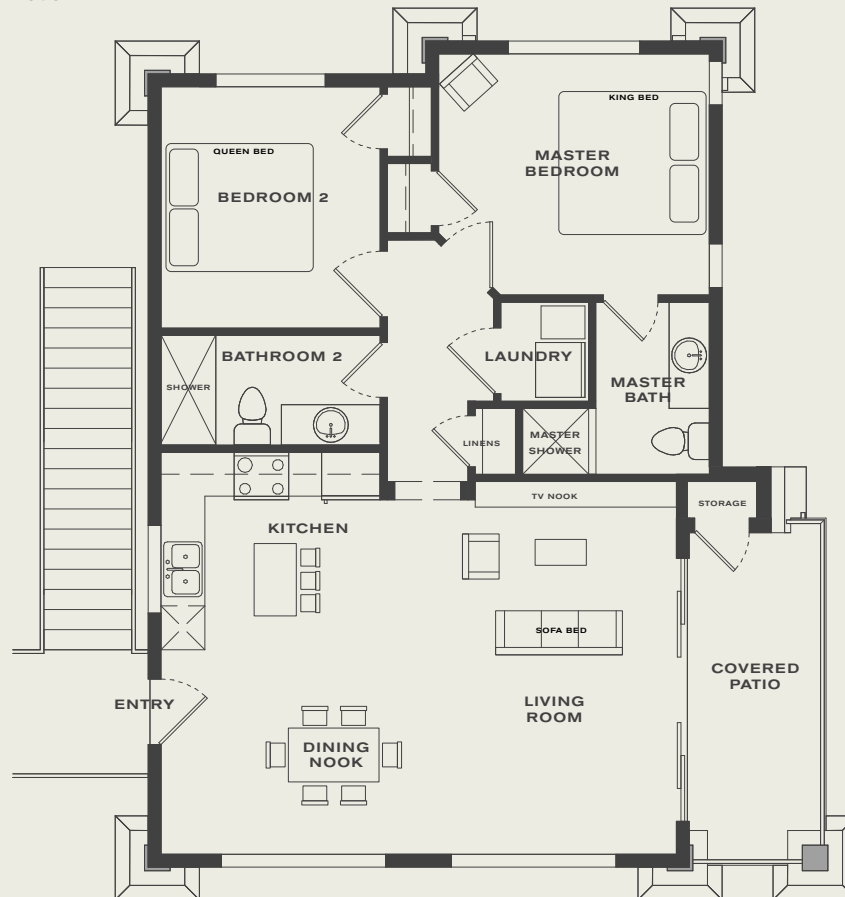


2-6
CAPACITY



MYSTERY FALLS VILLA

Unit 7 / Upper Level





LAFAVE LUXURY RENTALS
ECHO CANYON VILLA

LUXURY VILLAS

DELUXE VILLA This two bedroom apartment style villa is perfect for one or two couples, or a family. Includes 2 private bedrooms, 2 bathrooms, full size kitchen, dining table, walk-in tile showers, washer/dryer, and living room with sofa bed. Includes a private covered deck with amazing views. Please see amenities pages 16-20 for full list of LaFave offerings.

ECHO CANYON VILLA

NEW VILLA
OPENED JUNE 2020

2



BEDROOM

2



BATHROOM

1



KING BED

1



QUEEN BED

1



SOFA BED

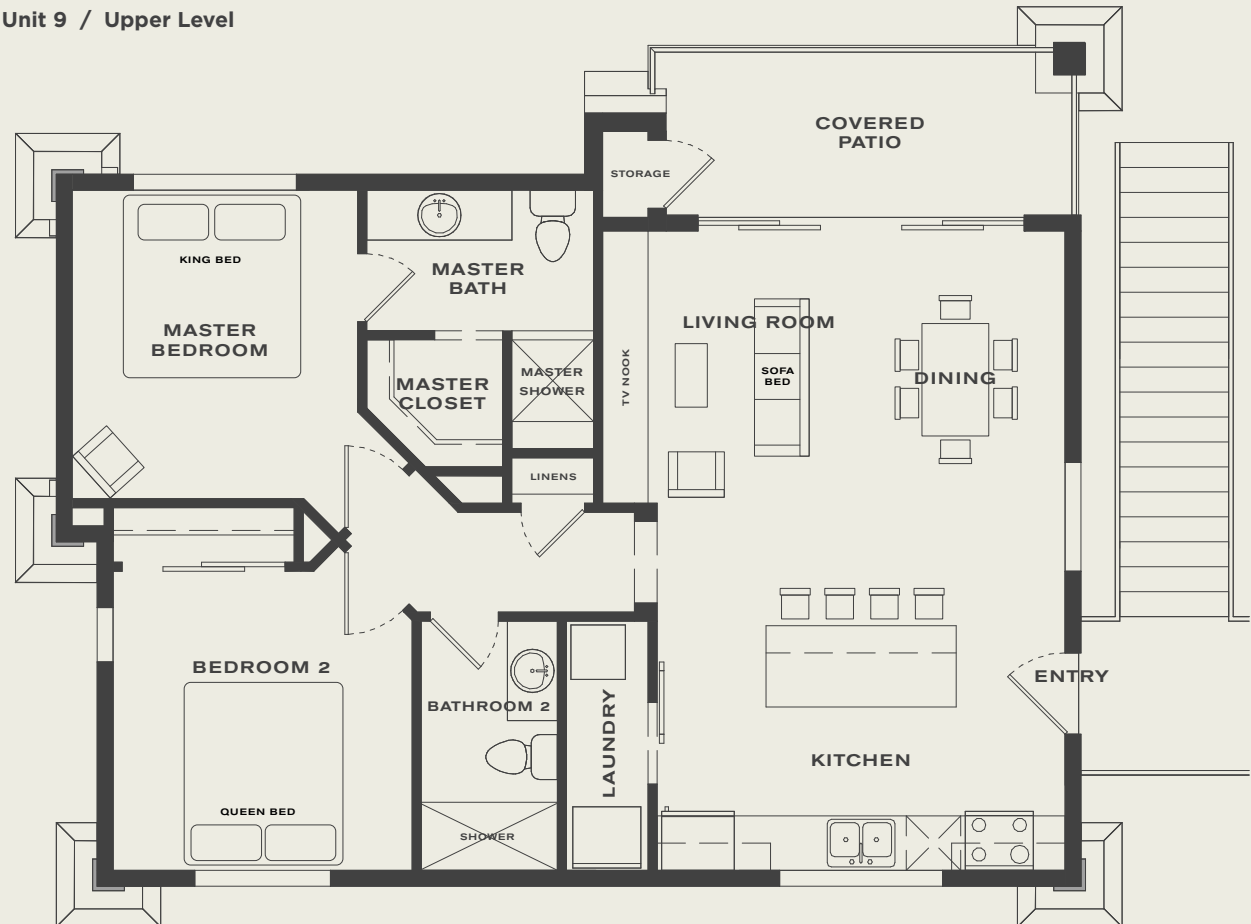
1004
SQ FT

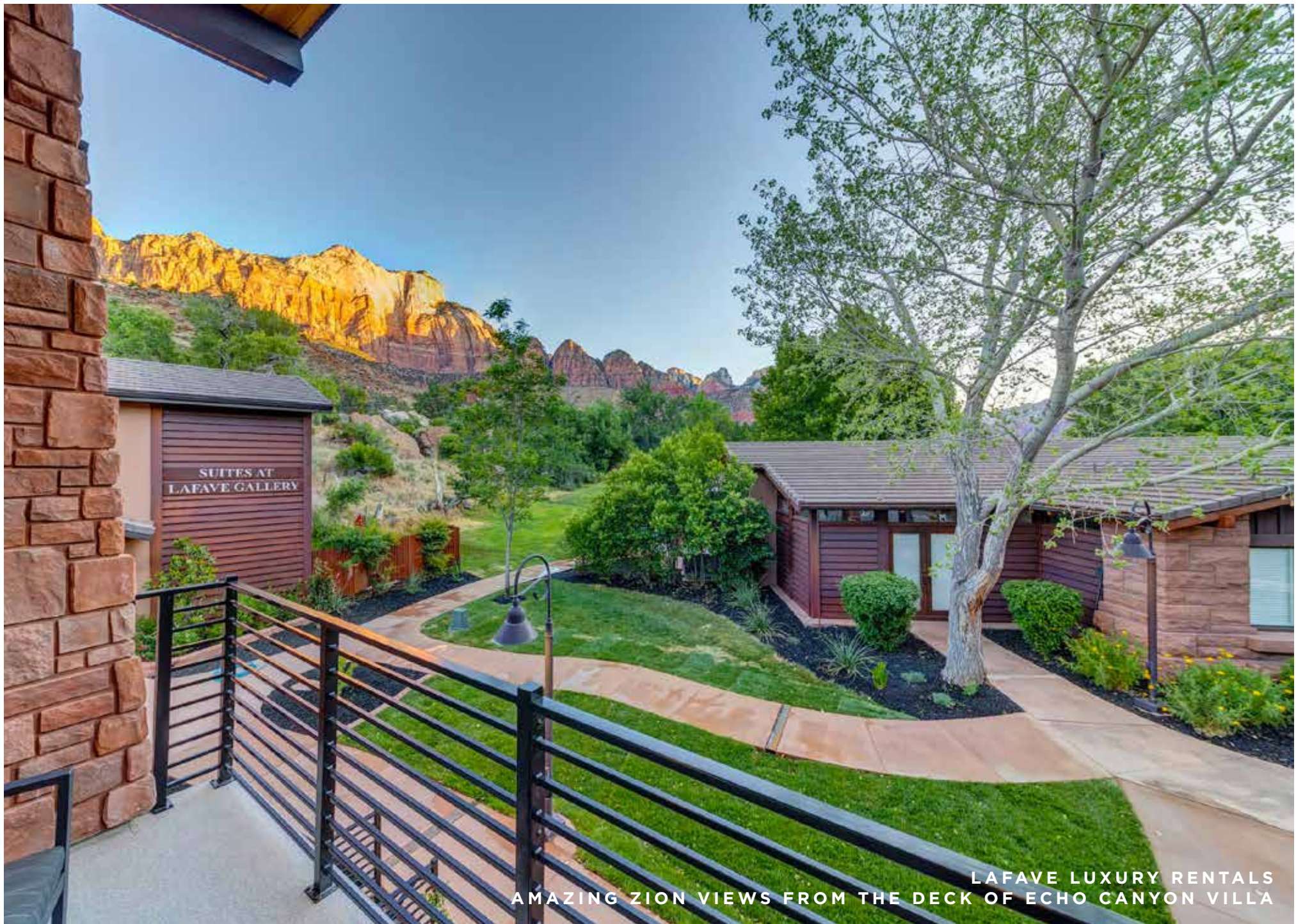
2-6
CAPACITY



ECHO CANYON VILLA

Unit 9 / Upper Level





LAFAVE LUXURY RENTALS
AMAZING ZION VIEWS FROM THE DECK OF ECHO CANYON VILLA

GRAND VILLA This two bedroom apartment style villa is geared for one to three couples, or a family group. Includes 2 private bedrooms, 2 bathrooms, full size kitchen, dining table, walk-in tile showers, washer/dryer, and living room on the main level with a sofa bed, plus a bonus/game room downstairs with a sofa bed. Includes a private patio with views. Please see amenities pages 16-20 for full list of LaFave offerings.

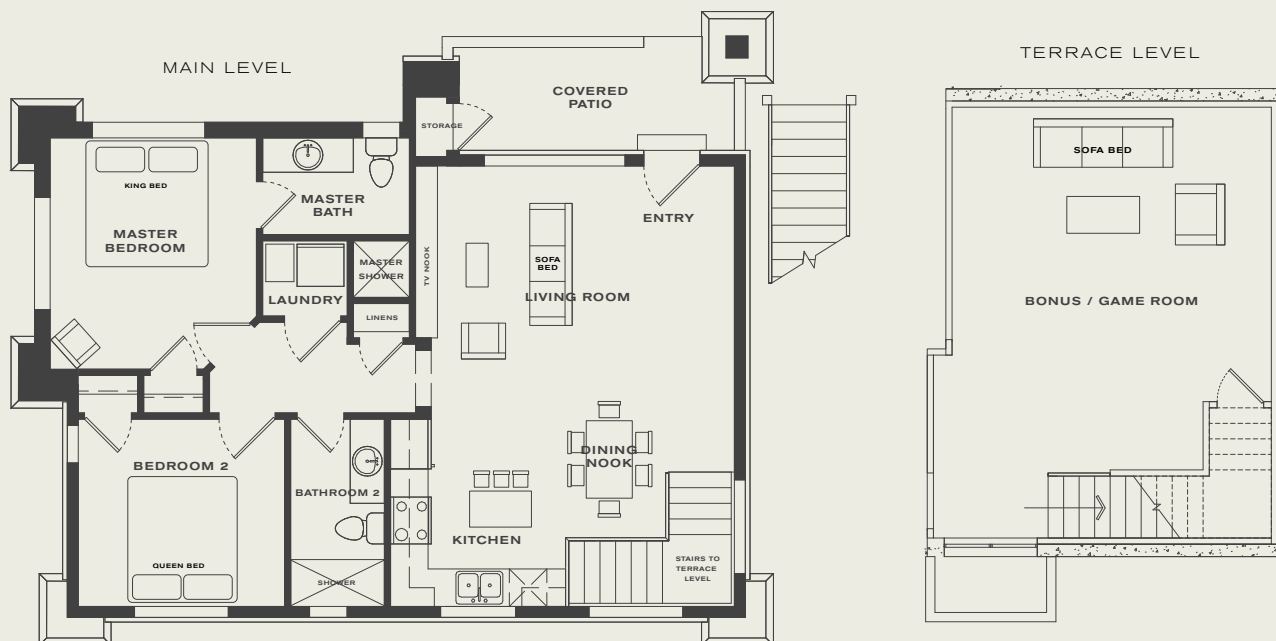
**NEW VILLA
OPENED JUNE 2020**

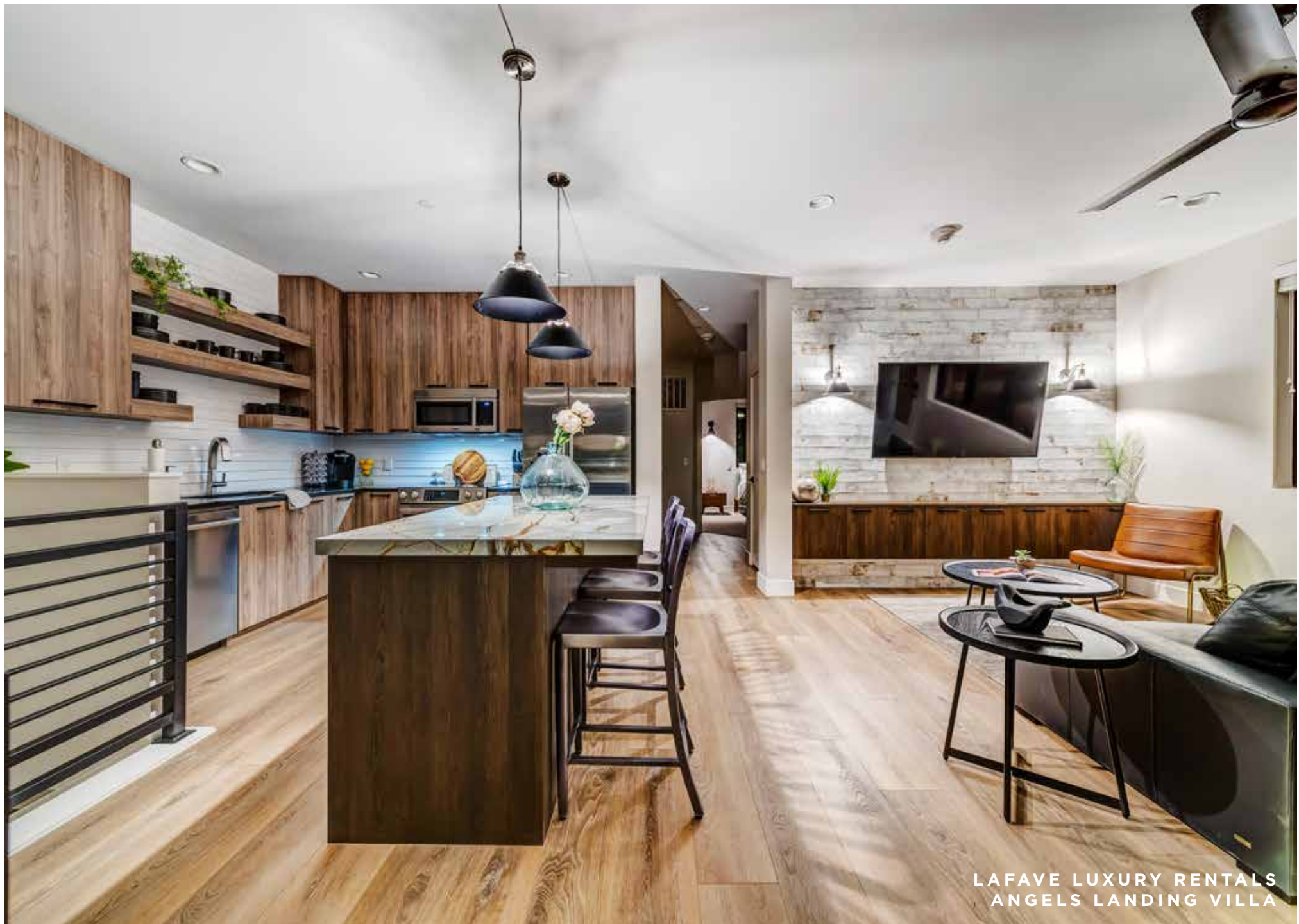
1472
SQ FT

4-8
CAPACITY



Unit 8 / Main Level, Terrace Level





LAFAVE LUXURY RENTALS
ANGELS LANDING VILLA

LUXURY VILLAS

PREMIER VILLA This three bedroom apartment style villa is the ultimate in spacious luxury for a group of friends or a family group. Includes 3 private bedrooms, 3 bathrooms, full size kitchen, dining table, walk-in tile showers, washer/dryer, and living room on the main level with a sofa bed, plus a bonus/game room downstairs. Includes a private patio with views. See amenities pages 16-20 for full list of LaFave offerings.

ANGELS LANDING VILLA

NEW VILLA
OPENED JUNE 2020

3



BEDROOM

3



BATHROOM

1



KING BED

3



QUEEN BED

1



SOFA BED

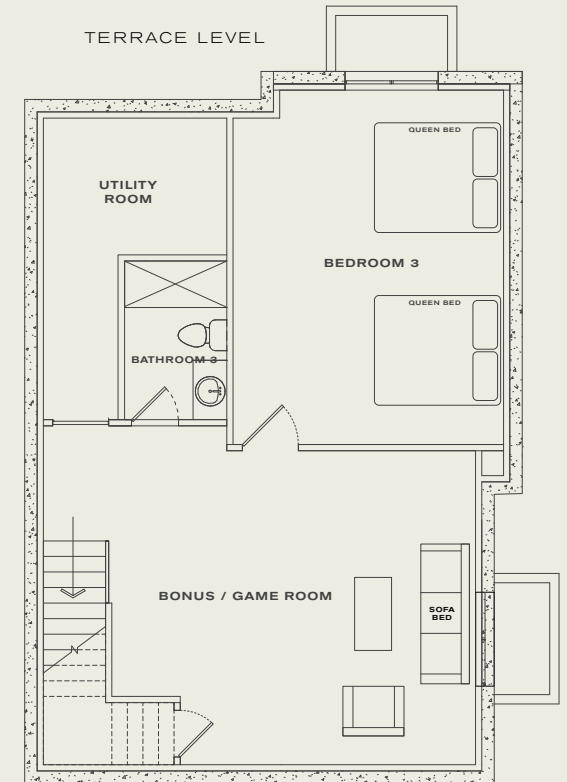
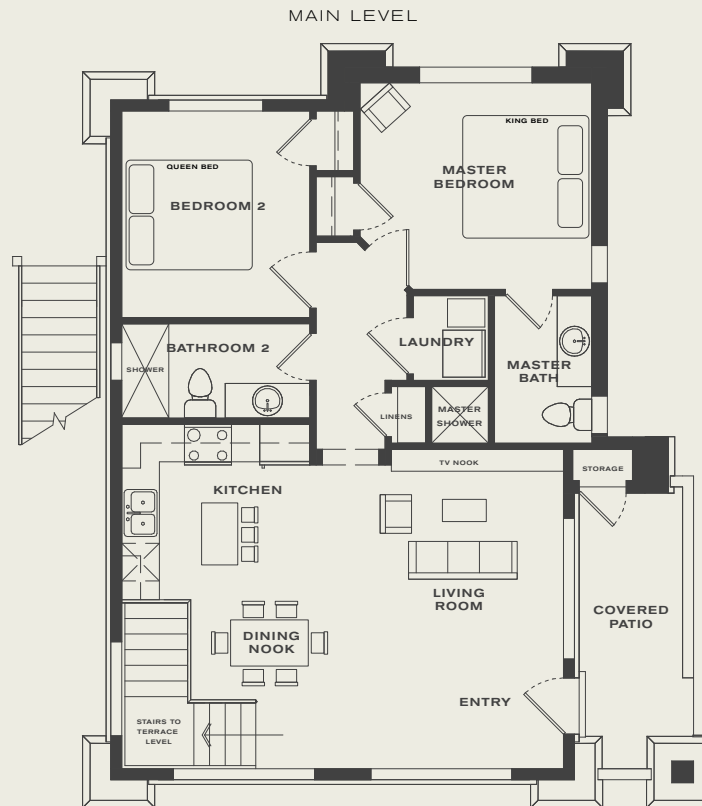
1848
SQ FT

4-10
CAPACITY



ANGELS LANDING VILLA

Unit 6 / Main Level, Terrace Level



LUXURY HOMES

LAFAVE






LUXURY RENTALS
AT ZION

LUXURY HOMES

PREMIUM LUXURY HOUSE The Bridge Mountain House was beautifully remodeled in June of 2019 and has 3 bedrooms with 6 beds that can sleep 8 people. It has 2 full bathrooms, a brand-new full kitchen with stainless Bosch appliances and quartz countertops. Includes a dining table, walk-in tile showers, washer/dryer, and living room. Read the full description online.

BRIDGE MOUNTAIN HOUSE

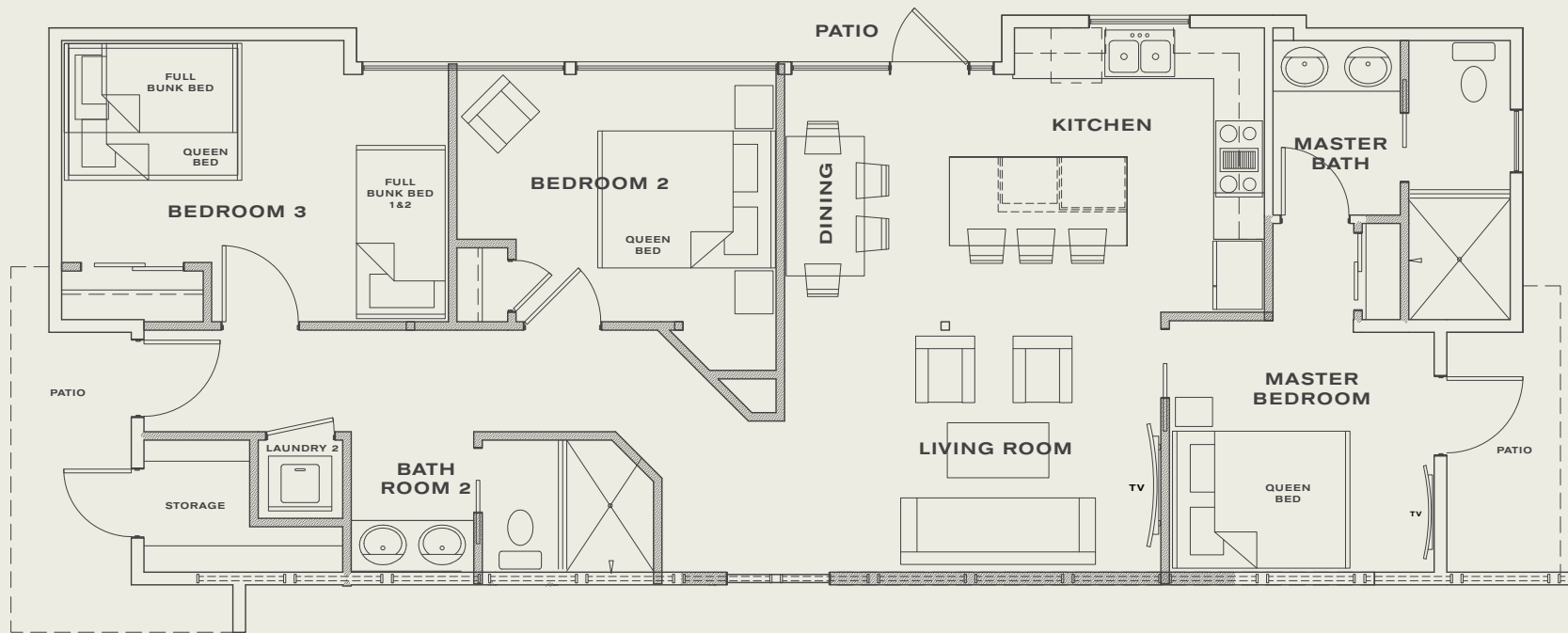
3	2	3	3
			
BEDROOM	BATHROOM	QUEEN BED	FULL BED

1308
SQ FT

4-8
CAPACITY

BRIDGE MOUNTAIN HOUSE

Unit 3 / Main Level










LAFAVE LUXURY RENTALS
BRIDGE MOUNTAIN HOUSE

LUXURY HOMES

EXECUTIVE LUXURY HOUSE The West Temple House was beautifully remodeled in June of 2019 and has 3 bedrooms with 8 beds that can sleep 10 guests. It has 2 full bathrooms and a brand-new full kitchen with stainless Bosch appliances and quartz countertops. Contains a dining table, walk-in tile showers, washer/dryer, and living room. This house is the nicest place to stay in Zion that can hold a large group AND it is located in the heart of Springdale — 2 minutes away from the entrance to Zion. Read the full description online — it is loaded with amenities.

WEST TEMPLE HOUSE

3	2	1	2	5
				
BEDROOM	BATHROOM	KING BED	QUEEN BED	FULL BED

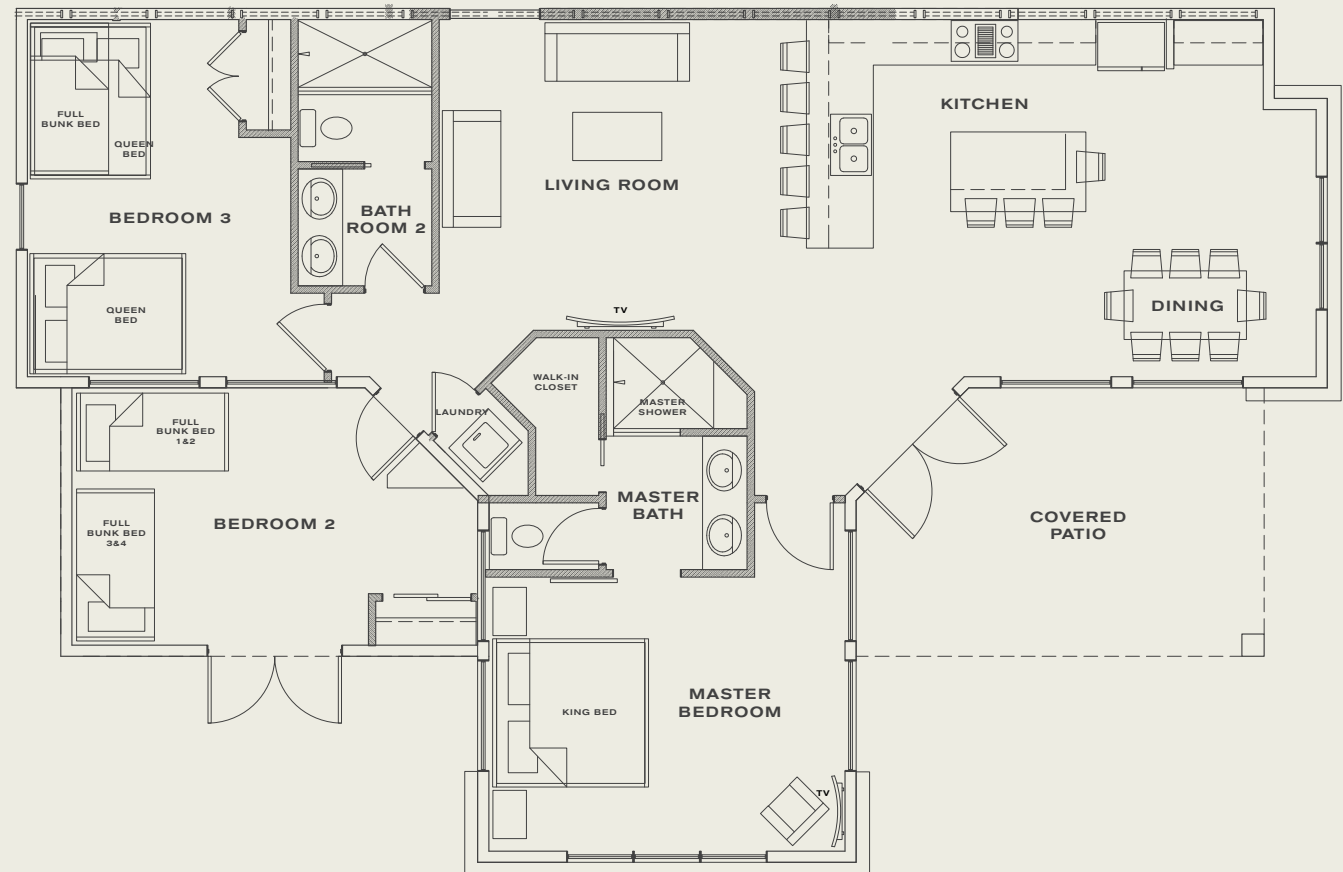
1920
SQ FT

4-10
CAPACITY



WEST TEMPLE HOUSE

Unit 4 / Main Level





LAFAVE LUXURY RENTALS
WEST TEMPLE HOUSE



LAFAVE LUXURY RENTALS
WEST TEMPLE HOUSE

LUXURY HOMES

PRESIDENTIAL LUXURY HOUSE Made by combining the West Temple House and the Bridge Mountain House together, this 6 bedroom home was converted from the former LaFave art gallery. It is simply the nicest home to rent in Zion—you will not find a better house closer to the park entrance. No expense was spared in this stunner, with top of the line finishes, appliances and beds. For those who want the ultimate in lodging while visiting Zion, this is it.

THE GALLERY HOUSE

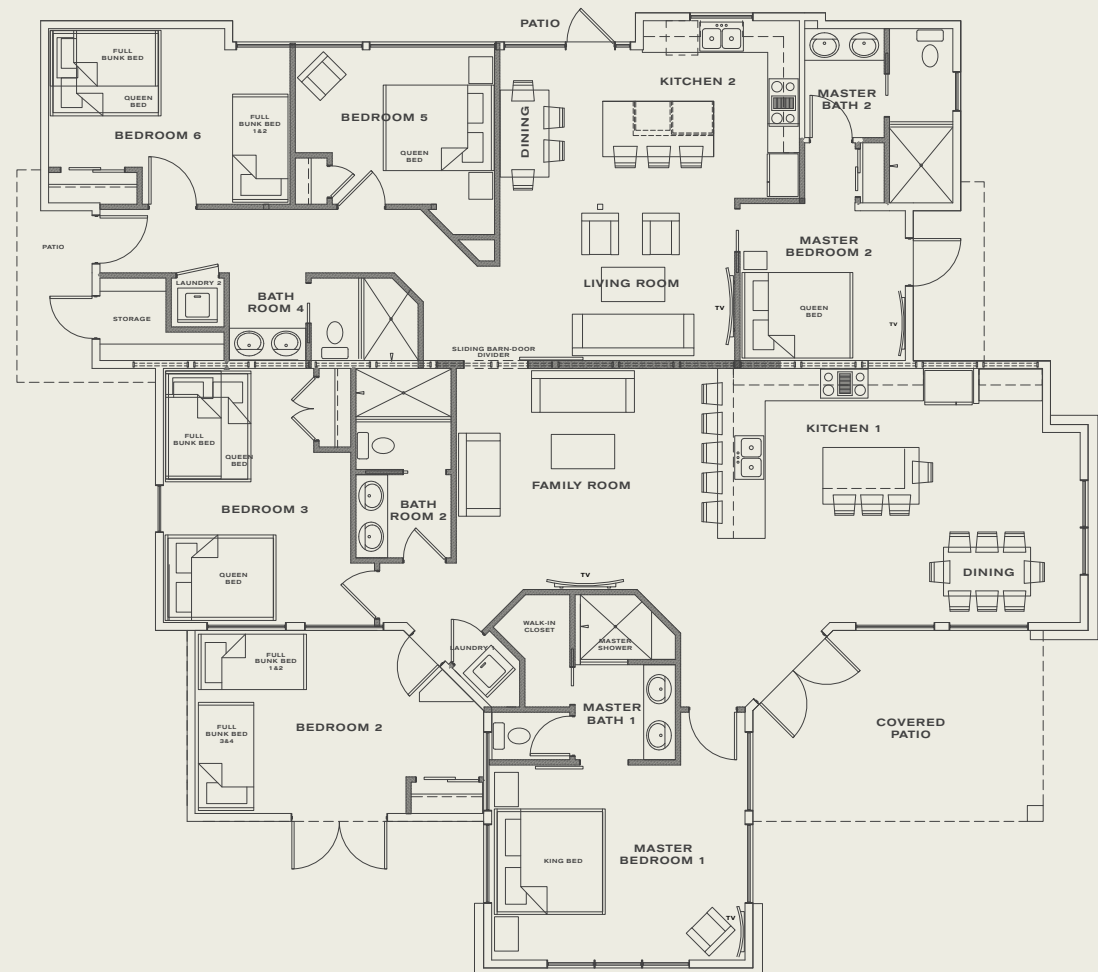


3228
SQ FT

6-16
CAPACITY

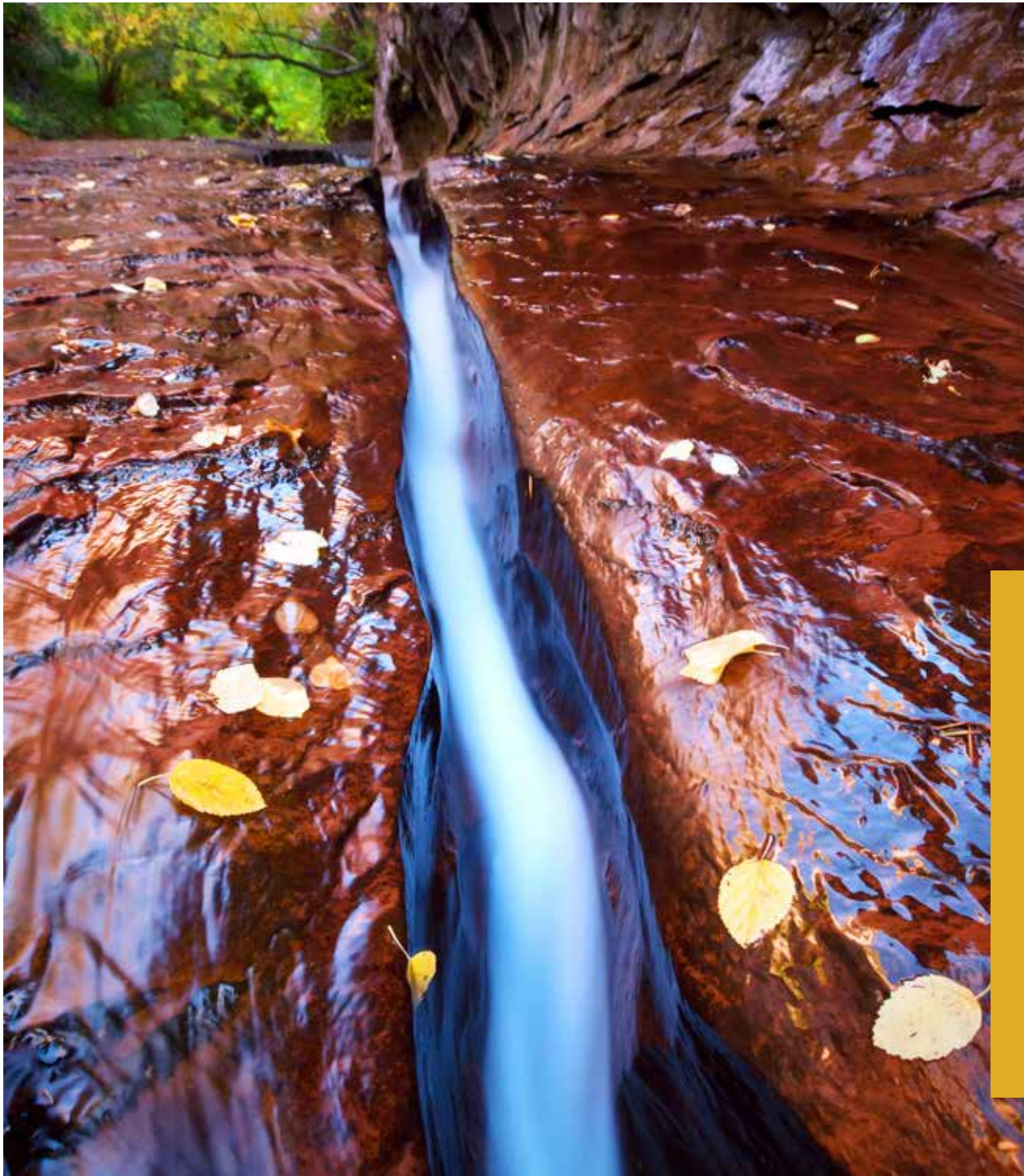


THE GALLERY HOUSE Unit 5 / Main Level





LAFAVE LUXURY RENTALS
THE GALLERY HOUSE



ZION TRIP PLANNER

If you would like a comprehensive Zion guide, then visit our website at lafavezion.com and there you may download a PDF of our Zion Insiders Guide that serves as your complete Zion vacation planner.



DOWNLOAD OUR ZION TRIP PLANNER PDF

- Zion Insiders Guide
- Zion Hiking Guide
- Zion Activities
- Springdale Insiders Guide
- LaFave Luxury Resort Guide



ZION NATIONAL PARK
THE LEFT FORK OF NORTH CREEK

4 MAJOR ZONES OF ZION NATIONAL PARK

★★★★ Kolob Canyons

ZONE
4

This zone is 45 minutes from Springdale. Very scenic and few visitors.

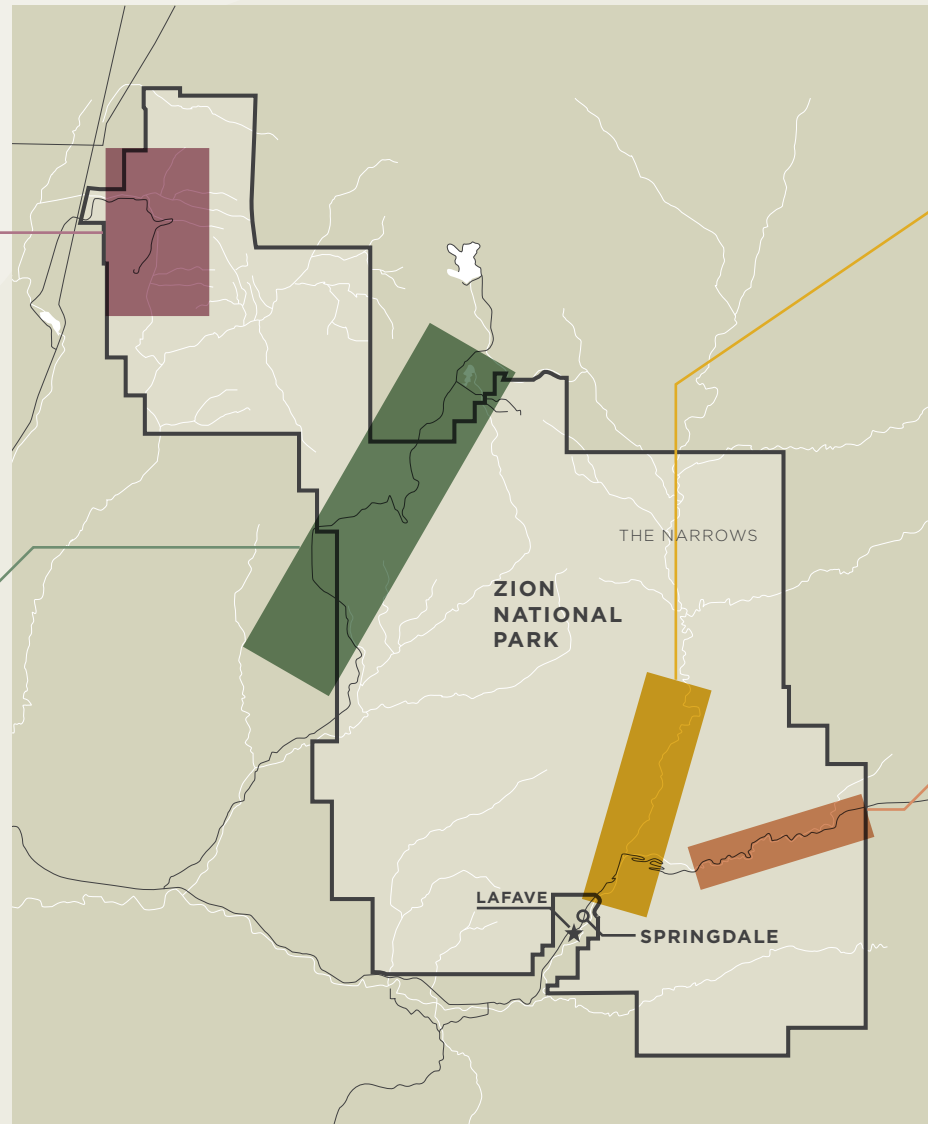
HIGHLIGHTS: Timber Creek Overlook trail (1 mile), the Taylor Creek Trail (5 miles), and the 14-mile Kolob Arch Trail — at 310 feet, it's the second largest arch in the world.

★★★★ Kolob Terrace Road

ZONE
3

Although rarely visited compared to the main Zion Canyon, this section of the park is extremely beautiful and has few crowds. If you want an otherworldly scenic drive, then head up this road in the late evening and be prepared to get amazed.

HIGHLIGHTS: The Kolob Terrace Road zone is how you access many great hikes in Zion such as the Subway, the West Rim Trail (top-down route), and Northgate Peaks Trail.



★★★★★ Zion Canyon

Zion Canyon is the zone that most people are coming to see. The main Zion Canyon holds most of the famous sites. This narrow, deep canyon is the centerpiece of the Park. This zone is so busy that for 9 months of the year you must take the free shuttle to access Zion Canyon.

HIGHLIGHTS: The Narrows, Angels Landing, Emerald Pools, The Great White Throne, Court of the Patriarchs, etc.

★★★★★ Upper East Canyon

This section of the park is accessed through the Zion-Mt Carmel Highway with its famous 1.1 mile tunnel built by the C.C.C. in 1930. This zone of the park is underrated—it contains some of the most scenic sandstone peaks and canyons found anywhere on earth. We highly recommend visiting the East Canyon—you won't be disappointed. This zone is much less crowded than Zion Canyon.

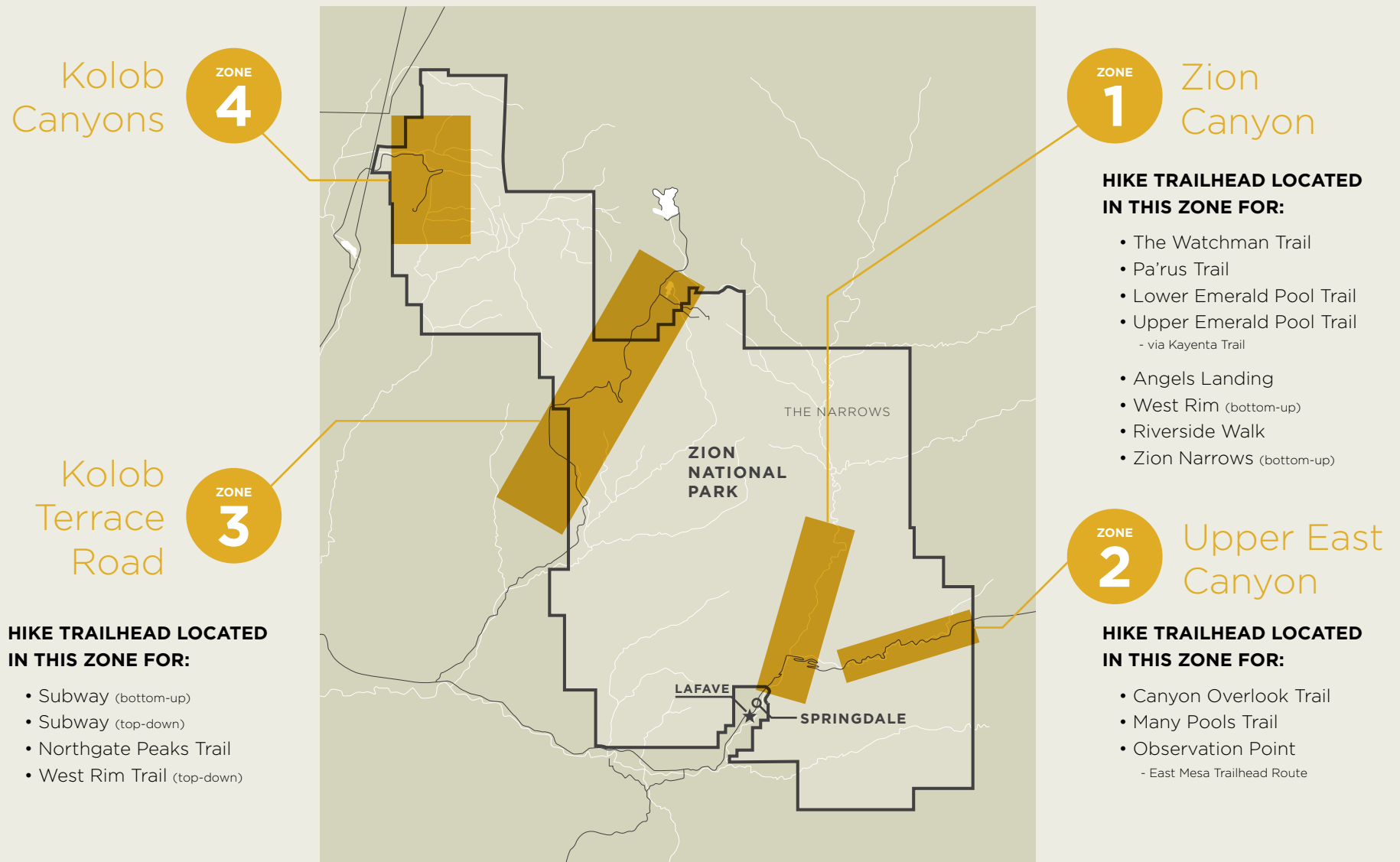
HIGHLIGHTS: The Canyon Overlook Trail, Many Pools Trail, the Checkerboard Mesa, and numerous scenic side canyons. This zone has the best bighorn sheep viewing.

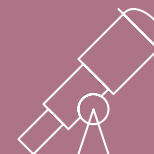
16 ZION HIKES WE RECOMMEND*

*for detailed information on these hikes, download the LaFave Zion Insiders Guide.

HIKE	DIFFICULTY	RATING	STARTING POINT	AVG TIME	ROUND TRIP	ELEVATION CHANGE
Riverside Walk	● Easy	★★★★★	Temple of Sinawava (Zion Canyon shuttle stop #9 – the last stop)	1 - 1.5 hrs	2.2 miles	57 ft gain
Lower Emerald Pool Trail	● Easy	★★★★★	Zion Lodge (Zion Canyon shuttle stop #5)	45 min- 1 hr	1.2 miles	70 ft gain
Northgate Peaks Trail	● Easy	★★★★★	Kolob Terrace Road at the Wildcat Canyon Trailhead (not in the main Zion Canyon)	2-3 hrs	4 miles	Minimal elevation change
Pa'rus Trail	● Easy	★★★★★	South Campground close to the Zion Canyon Visitor Center	1 - 2 hrs	3.5 miles	50 ft gain
Zion Narrows Day Hike "bottom-up day hike" via Riverside Walk — no permit required for the bottom-up Narrows hike	● Moderate	★★★★★	Temple of Sinawava (Zion Canyon shuttle stop #9 – the last stop)	2 to 8 hrs length is up to you - it's an out-&-back hike	up to 10 miles maximum round-trip distance to Big Springs	200-300 ft gradual gain
Upper Emerald Pool Trail via Kayenta Trail	● Moderate	★★★★★	The Grotto Trailhead (Zion Canyon shuttle stop #6)	1.5 – 2 hrs	2.8 miles	400 ft gain
Canyon Overlook Trail	● Moderate	★★★★★	Zion-Mt. Carmel Highway 9 just after the big tunnel on the east side.	1 hr or less	1 mile	160 ft gain
Many Pools Trail	● Moderate	★★★★★	Upper East Canyon along the Zion-Mt. Carmel Highway 9. Park 0.9 miles east of the small tunnel.	1 – 2 hrs	1-3 miles	200 ft gain
The Watchman Trail	● Moderate	★★★★★	Zion Canyon Visitor Center	1 - 2 hrs	3.3 miles	360 ft gain
Angels Landing	● Strenuous	★★★★★	The Grotto Trailhead Zion Canyon shuttle stop #6	3 - 5 hrs	5 miles	1500 ft gain
West Rim Trail top-down route via the West Rim Trailhead or Lava Point — day-hike: no permit required; overnight: permit required	● Strenuous	★★★★★	West Rim Trailhead off the Kolob Terrace Road (hike doesn't start in Zion Canyon, but it ends there)	6-10 hrs with a day-pack 8-12 hrs with backpacking gear	15 miles (point to point)	4400 ft total descent and 1,000+ feet of ascent
West Rim Trail bottom-up day hike via the Grotto Trailhead	● Strenuous	★★★★★	The Grotto Trailhead Zion Canyon shuttle stop #6	4-7 hrs to Cabin Spring & back 7-12 hrs to reach upper plateau	8.5 miles to Cabin Spring 13 miles to upper plateau	3000 ft gain to the upper plateau
Zion Narrows "top-down route" via Chamberlain Ranch — requires permit	● Strenuous	★★★★★	Outside the east park entrance at Chamberlain Ranch . Best to use a shuttle service.	10-13 hrs as a day hike 12-18 hrs with backpacking gear	18 miles one-way hike (top-down route)	1500 ft gradual descent
The Subway top-down route *requires permit	● Strenuous	★★★★★	Kolob Terrace Road at the Wildcat Canyon Trailhead (not in the main Zion Canyon)	6-10 hrs	9.5 miles	2000 ft descent, 400 ascent
The Subway bottom-up route *requires permit	● Strenuous	★★★★★	Kolob Terrace Road at the Left Fork Trailhead (not in the main Zion Canyon)	5-8 hrs	8 miles	1400 ft gain
Observation Point via Echo Canyon (or hike may be accessed from East Mesa Trailhead)	● Strenuous	★★★★★	Weeping Rock Trailhead (Zion Canyon shuttle stop #7) or hike may be accessed from the east side of the park at the East Mesa Trailhead. Weeping Rock shuttle stop is currently closed (as of June 2020).	4-6 hrs	8 miles	2200 ft gain from Weeping Rock

STARTING ZONES OF THE RECOMMENDED HIKES





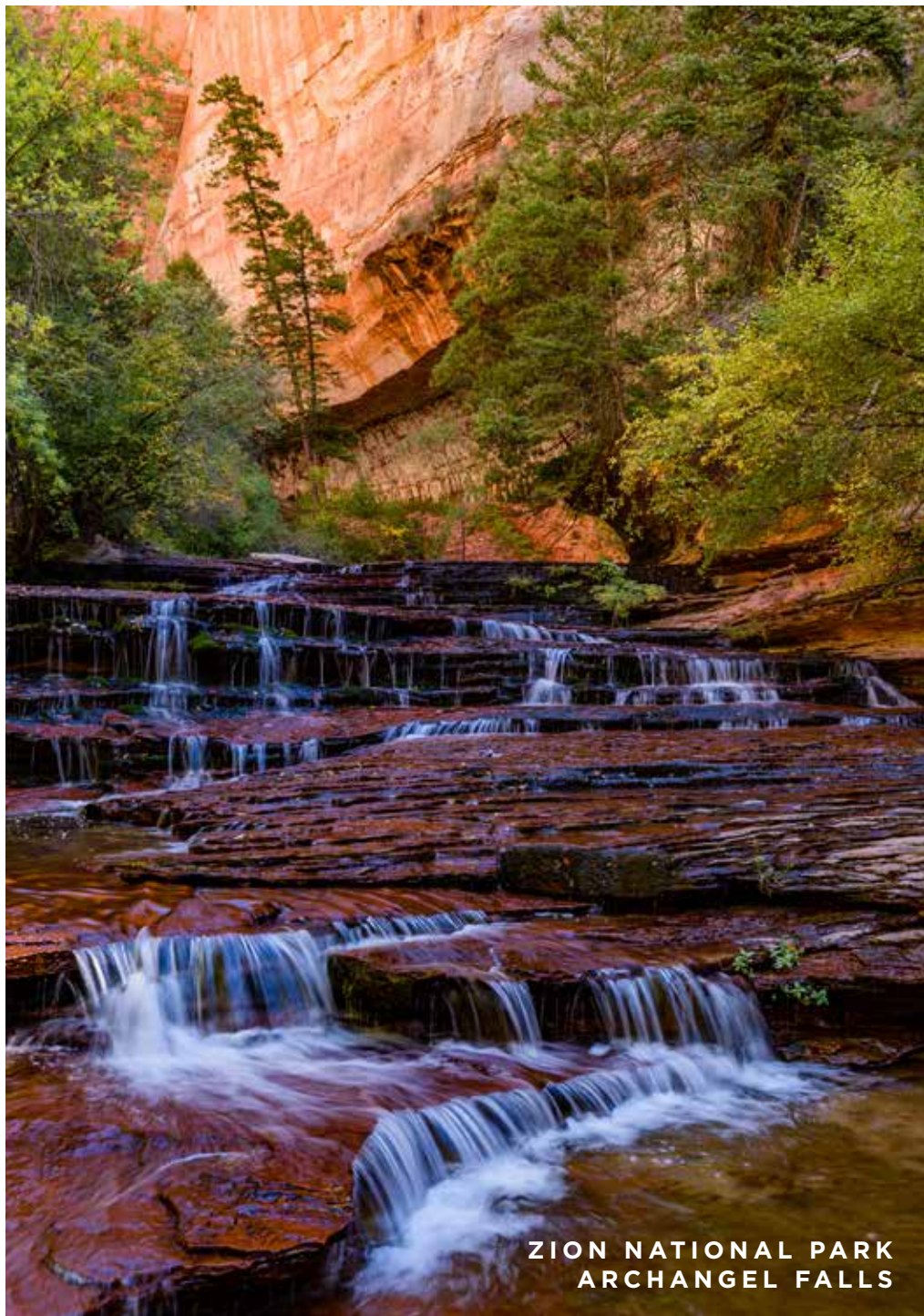
Stargazing at Zion



The stargazing in and around Zion is awe-inspiring. Springdale has strict dark-sky city ordinances to limit light pollution to enable prime stargazing. The dark night sky, filled with thousands of stars, rises above the jagged silhouette of the cliffs to frame an unforgettable view.

Eighty percent of Americans live in an area where they cannot see the Milky Way due to the light pollution of the cities. With little to no light pollution in Zion, the Milky Way is indeed milky: you can distinctly see the Milky Way band. Some LaFave guests have commented this is the first time they've ever truly seen it.

**ZION NATIONAL PARK
OBSERVATION POINT**



**ZION NATIONAL PARK
ARCHANGEL FALLS**

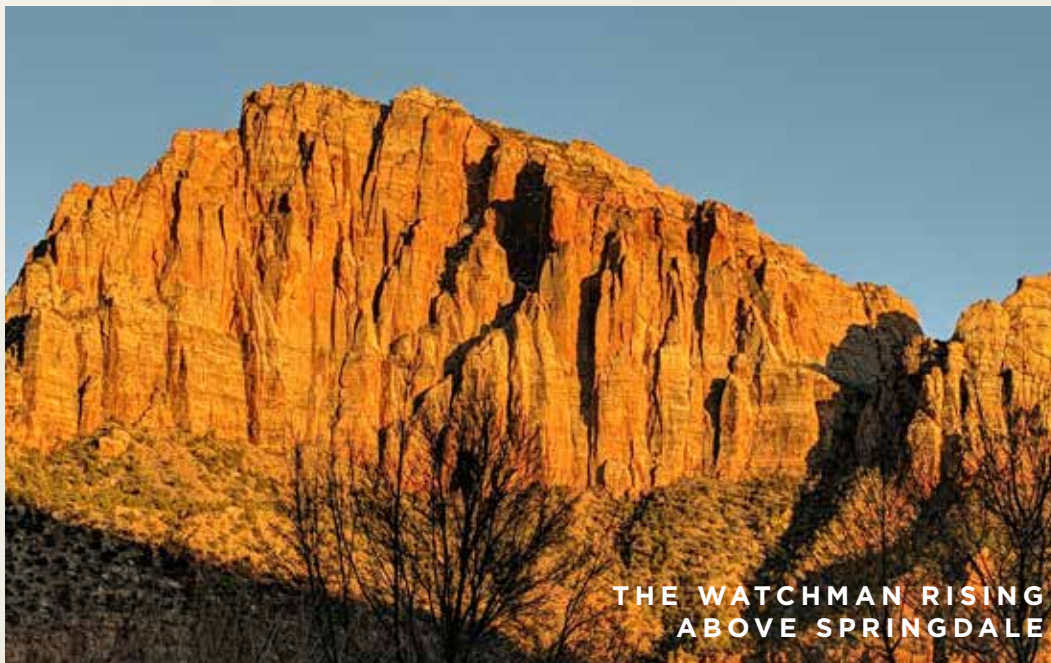


**ZION NATIONAL PARK
THE NARROWS**

SPRINGDALE UTAH OVERVIEW

Springdale is a city of the arts and music — with many art galleries, shops, and a large music festival each fall that draws thousands of visitors.

Springdale is the perfect base camp for your Zion trip. LaFave is located in the heart of Springdale, and sits 1 mile from the south Zion National Park entrance. LaFave features a free Zion shuttle stop directly in front of the property.



As you walk around town, gaze up at the Zion Canyon monoliths that rise 3,800 feet above the town.



LaFave Luxury Resort, Springdale Utah.



SPRINGDALE UTAH OVERVIEW

Springdale stands out in the desert as an oasis of beauty. With the clean waters of the Virgin River flowing through the center of town, there is an abundance of water and greenery. Springdale looks like a ribbon of emerald green in contrast to the bright red walls of Zion Canyon that surround the town.

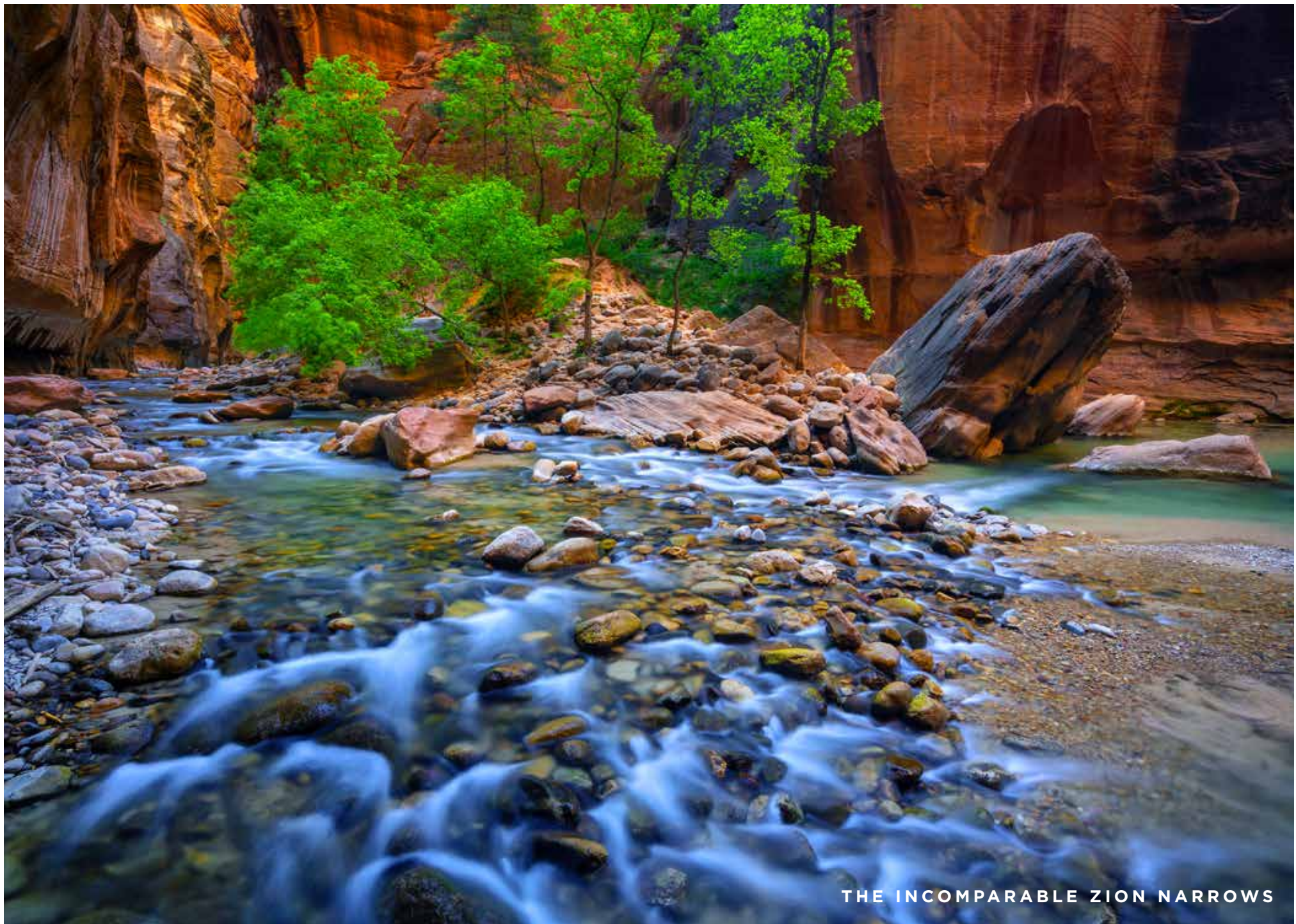
SHOPS & GALLERIES

ART GALLERIES	SHUTTLE STOP	PHONE
Worthington Gallery	4	435-772-3446
David J West Photography	4	435-772-3510
DeZion Gallery	5	435-772-6888
Sorella Gallery	5	435-772-0622
Tribal Arts Zion	2	435-772-3353
JEWELRY & BOUTIQUES	SHUTTLE STOP	PHONE
Crystals & Creatures	4	435-772-0577
Joy Craft & Design	5	435-359-3845
Lazy Lizard Boutique	5	435-772-3050
Frontier Plunder (Antiques)	6	435-772-3045
GIFT SHOPS	SHUTTLE STOP	PHONE
Switchback Trading Co.	6	435-772-3700
Springdale Visitor Center	6	435-429-1555
Zion Canyon Offerings	5	435-772-3546
Bumbleberry Gift Shop & Bakery	5	435-772-3224
Simply Birkenstock	5	435-772-3500
Zion Park Gift & Deli	5	435-772-3843
Hoodooos General Store	3	435-772-3101
Trailhead Gifts & Gear	1	435-772-2420
Majestic View Trading Post	9	435-772-0665
ROCK & GEM SHOPS	SHUTTLE STOP	PHONE
Zion Rock & Gem	7	435-772-3436
Silver Bear Enterprises	8	435-772-3939
PET BOARDING	SHUTTLE STOP	PHONE
Doggie Dude Ranch	Rockville	435-772-3105



SPRINGDALE UTAH GUIDE

GROCERY & HARDWARE	SHUTTLE STOP	PHONE
Sol Foods Supermarket	5	435-772-3100
Sol Foods Hardware	5	435-772-3101
Hoodooos General Store	3	435-772-3101
Happy Camper Market	1	435-772-7805
COFFEE & LIQUOR	SHUTTLE STOP	PHONE
Deep Creek Coffee Company	5	435-669-8849
Café Soleil	2	435-772-0505
Perks at Zion Espresso	1	435-772-0529
Switchback State Liquor Store	6	435-772-3700
ICE CREAM & CANDY	SHUTTLE STOP	PHONE
Springdale Candy Co. (+ ice cream)	5	435-772-0485
Zion Park Gift & Deli (+ ice cream)	5	435-772-3843
Hoodoo's Market (+ ice cream)	3	435-772-3101
OUTDOOR OUTFITTERS	SHUTTLE STOP	PHONE
Zion Adventure Company	3	435-772-1001
Zion Guru	5	435-632-0432
Zion Outfitter	1	435-772-5090
Zion Mountaineering School	5	435-319-0313
Zion Rock and Mtn. Guides	7	435-772-3303
Zion Guide Hub	5	435-414-8040
GEAR & CLOTHING	SHUTTLE STOP	PHONE
Zion Outdoor Gear & Clothing	5	435-772-0630
Canyon Outfitters	5	435-772-0252



THE INCOMPARABLE ZION NARROWS

THE BEST RESTAURANTS

SPRINGDALE RESTAURANT GUIDE

Please check all restaurants for seasonal closings and specific hours they open/close. Springdale restaurants have hours of operation that vary widely throughout the year.

RESTAURANT	OUR RATING	HOURS	LOCATION	DISTANCE FROM LAFAVE	FOOD	DESCRIPTION
Bit N' Spur Restaurant & Saloon	★★★★★	Dinner 5pm - 11pm	(435) 772-3498 1212 Zion Park Blvd	Walking distance 50 yards north of LaFave property line	Southwestern grill & Americana along with Southern Utah's largest selection of micro-brews and fresh fruit margaritas.	Perhaps the most popular place in town. Great food, even better atmosphere, and excellent service. Favorite watering hole and gathering place for locals and visitors for many decades. You can't go wrong here — their food is delicious and they have a great outdoor dining area behind the restaurant.
The Spotted Dog	★★★★★	Dinner 5pm - 8pm	(435) 772-0700 428 Zion Park Blvd	1 mile to the north (2 minute drive from LaFave)	A casual American Bistro with cozy art-filled dining rooms and a European-style sidewalk café. Cuisines are handcrafted using fresh local produce, hormone-free meats and sustainably harvested fish.	Along with the Bit N' Spur, the Spotted Dog is probably our favorite place in town for dinner. Almost everything is good here and especially their salads, trout, and lamb.
Switchback Grille	★★★★☆	Dinner 5pm - 9pm (9:30 weekends)	(435) 772-3700 1149 Zion Park Blvd	Walking distance 75 yards to the east of LaFave (directly across the street)	The canyon's original prime steak and fresh seafood house. USDA Prime beef is hand-selected and aged 28 days. Filet mignon, New York Strip, rib eye are featured. Seafood is flown in fresh several times each week. Fresh halibut, sushi-grade Ahi, Alaskan king crab and jumbo shrimp. Extensive wine list rated 90 points and above.	High-end steakhouse. Amazing steaks, fish and shellfish. The Switchback is on the more expensive side, but very tasty. Their scallops are great and their fillet mignon ranks with the best of them.
King's Landing Bistro	★★★★☆	Dinner 5pm - 9pm (Closed Sun)	(435) 772-7422 1515 Zion Park Blvd	Walking distance 5 minutes easy stroll down Highway 9 or a 1-minute drive by car from LaFave.	American restaurant featuring steaks, salads, chicken, burgers, and general high-end fare.	A serious foodie place. A destination for those who enjoy fine cuisine. King's Landing features foods you won't find elsewhere around here. Dishes range from bone marrow to charred Spanish octopus to Bison Carpaccio. They offer a beautiful deck area in back to eat outside and watch the orange sunset glow off The Watchman Mountain. A favorite.
Whiptail Grill	★★★★★	Lunch & Dinner	(435) 772-0283 445 Zion Park Blvd	1 mile to the north (2 minute drive from LaFave)	Mexican food along with burgers, salads, sandwiches and wraps.	Don't let the exterior décor fool you! Yes, this restaurant was converted from an old gas station, but the Whiptail Grill has some of the highest quality food in town. This spot has become our standard lunch spot. The Whiptail has the best salads around and pretty much anything you order is good. Especially tasty are the grilled shrimp tacos and the mahi-mahi tacos. Their Whiptail Burrito is so large it can feed two people. Get their salad as your side dish with whatever you order—trust us, these guys have the best salad quality you will find in Springdale. Especially good is their house avocado dressing.

THE BEST RESTAURANTS

SPRINGDALE RESTAURANT GUIDE

RESTAURANT	OUR RATING	HOURS	LOCATION	DISTANCE FROM LAFAVE	FOOD	DESCRIPTION
Rosita's Santa Fe Kitchen	★★★★	Lunch & Dinner (Noon-8pm)	(435) 772-3222 2501 Zion-Mt. Carmel Hwy	1.7 miles south of LaFave on Highway 9 (3 min drive)	Santa Fe southwestern kitchen in the fast-casual style (order and pay first). Great food and cool atmosphere where you may eat outside on the picnic tables over grass and gawk at the incredible views from Paul Allen's ranch.	Paul Allen's restaurant (yes, that Paul Allen, the multi-billionaire co-founder of Microsoft). Mr. Allen purchased the Trees Ranch at the south end of town and was a huge fan of Santa Fe cooking, so he opened Rosita's at the ranch in the fall of 2018. Tragically he passed away just before Rosita's opened — but this great eatery lives on to honor him.
Jack's Sports Grill	★★★★	Lunch & Dinner (Noon-10pm)	(435) 772-3700 1215 Zion-Mt. Carmel Hwy	Walking distance 75 yards to the east of LaFave (directly across the street)	Burgers, BBQ, salads, and other American food in a contemporary venue with a sports bar and multiple TV's.	Nice little eatery directly across the street from LaFave when you are looking for a quick, good meal without a lot of fanfare. The bar features a broad selection of drinks with sports playing on multiple screens at all times. Food is good and served fast. Good option for a quick bite to eat.
Oscar's Cafe	★★★★	Breakfast, Lunch, & Dinner (7am-9pm)	(435) 772-3232 948 Zion-Mt. Carmel Hwy	0.4 miles to the north of LaFave on Highway 9	Mexican and American food. Tasty burgers and sandwiches.	Very popular place. Can be very crowded. Good food. Lots of people love to eat at Oscar's.

COFFEE SPOT & LIQUOR STORE

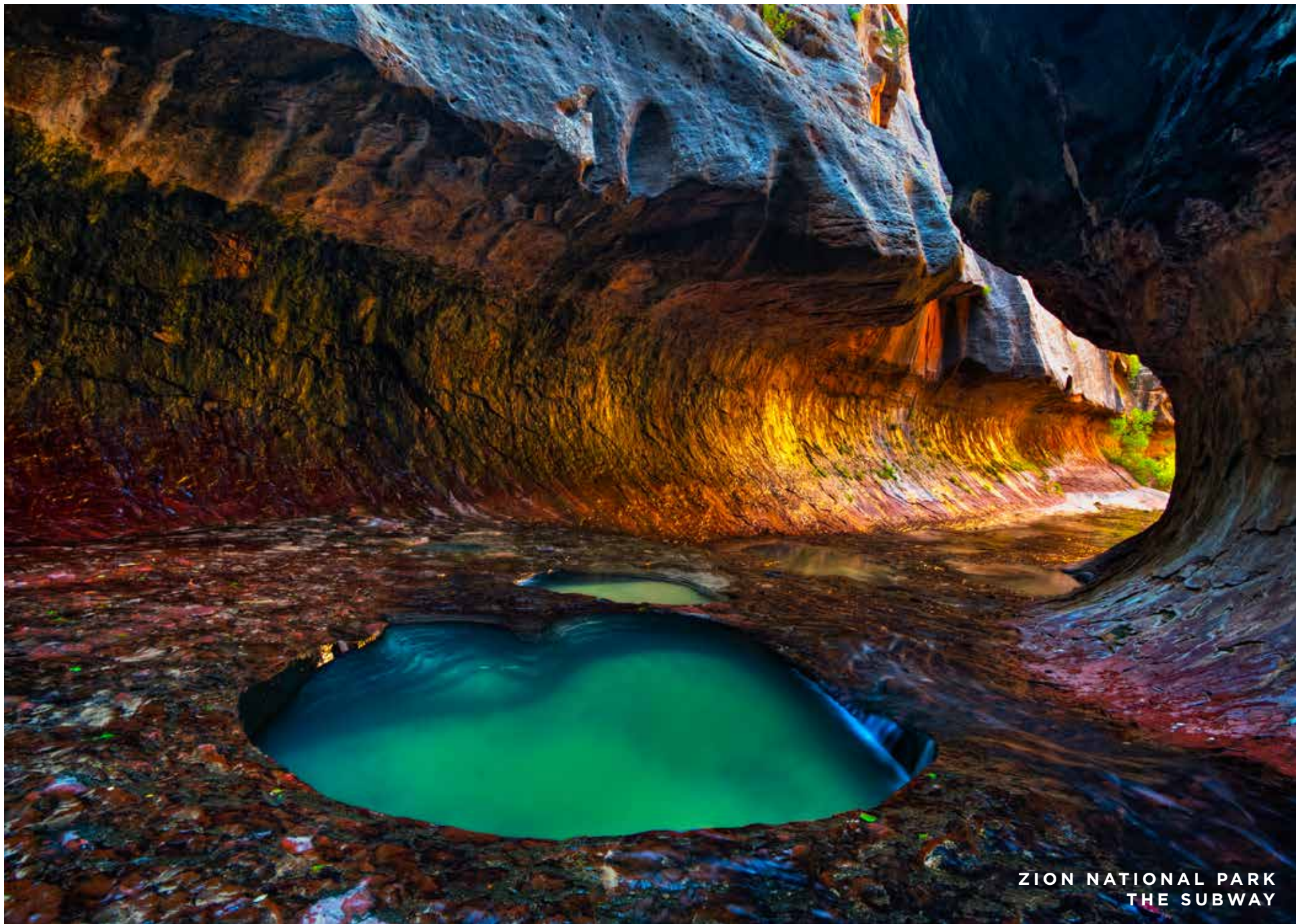
COFFEE & LIQUOR	HOURS	LOCATION	DISTANCE FROM LAFAVE	DESCRIPTION
Deep Creek Coffee Company	6am - 2pm	(435) 669-8849 932 Zion Park Blvd #3	0.4 miles to the north of LaFave on Highway 9	Coffee, pastries and breakfast. Great coffee, fairly pricey. A lot of locals go there regardless of the price. Good pastries and breakfast as well.
Switchback State Liquor Store	12- 7pm (Closed Sun)	(435) 772-3700 ext. 104 1149 Zion Park Blvd	Walking distance 75 yards to the east of LaFave (directly across the street)	The only liquor store within 40 miles of Springdale happens to be directly across the street from LaFave. Switchback Liquor features Springdale's only wine, liquor and full strength beer retail outlet. Excellent selection of wines from around the world with special emphasis on California varietals. Liquor inventory ranges widely as well, and includes a very nice assortment of value and premium products. Also stocks a broad variety of full strength beer choices representing several domestic and foreign brewers.

RESTAURANT LOCATIONS

RESTAURANTS	SHUTTLE STOP	PHONE
Bit N' Spur Restaurant & Saloon	6	435-772-3446
The Spotted Dog	3	435-772-3510
Switchback Grille	6	435-772-6888
King's Landing Bistro	7	435-772-0622
Whiptail Grill	3	435-772-3353
Rosita's Santa Fe Kitchen	South of 9	435-772-0577
Jack's Sports Grill	6	435-359-3845
Oscar's Cafe	5	435-772-3050
COFFEE & LIQUOR	SHUTTLE STOP	PHONE
Deep Creek Coffee Company	5	435-772-3700
Switchback State Liquor Store	6	435-429-1555

SPRINGDALE RESTAURANT GUIDE





ZION NATIONAL PARK
THE SUBWAY

LaFave is more than just a luxury vacation rental resort.

LaFave is a place where we have obsessed over the details.

It is a sanctuary where you may enjoy the beauty of Zion National Park right from your own private balcony.

It is a place to find refuge and recharge after a long day of touring the park.

It is quite simply the finest lodging in all of Zion.

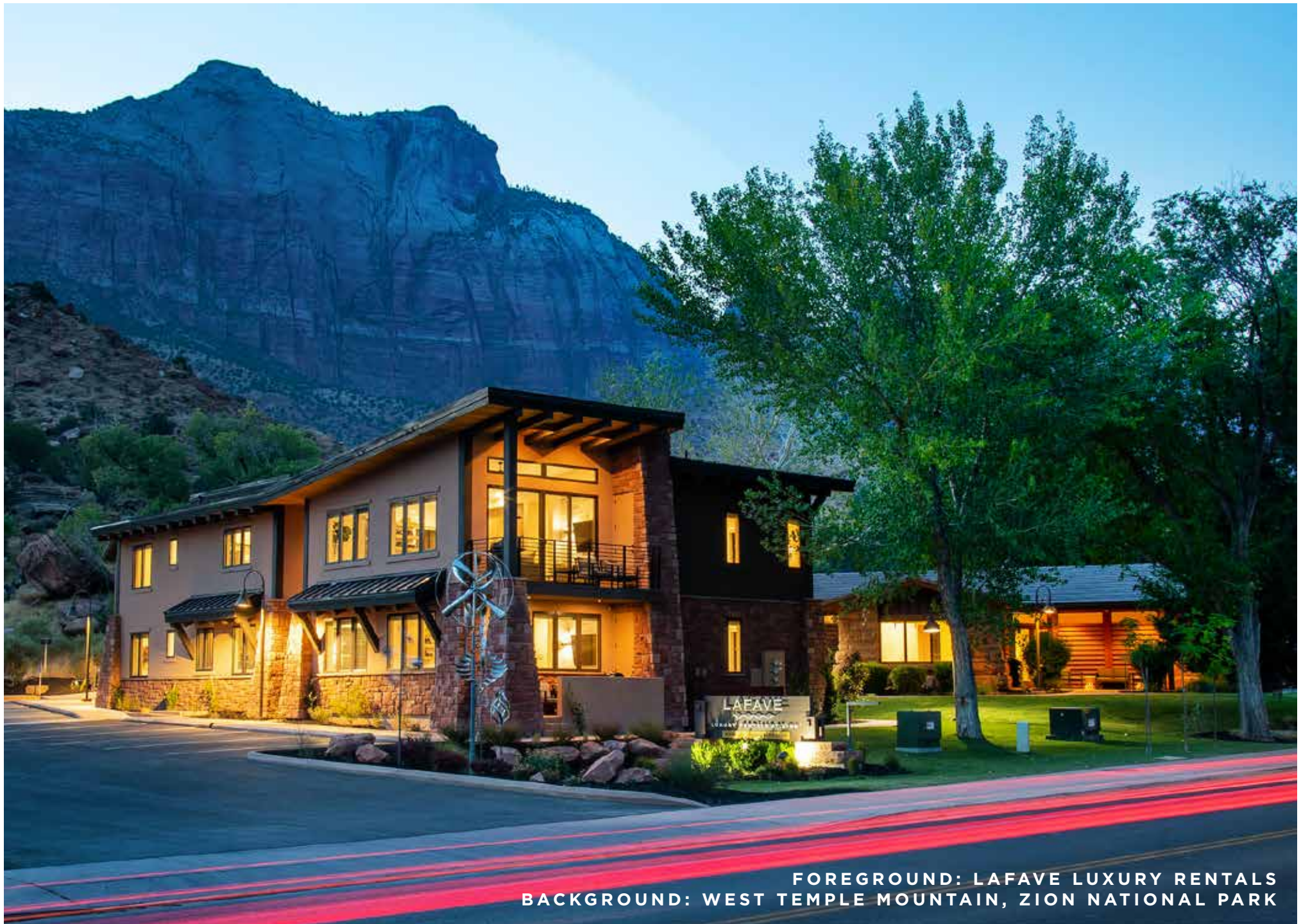


LaFave is a work of love. We continue to build our dream here in Zion and take great joy in sharing this magical place with our guests.

We hope you enjoy what we have created.

LAFAVE

LUXURY RENTALS
AT ZION



FOREGROUND: LAFAVE LUXURY RENTALS
BACKGROUND: WEST TEMPLE MOUNTAIN, ZION NATIONAL PARK

LAFAVE



LUXURY RENTALS
AT ZION

book at **lafavezion.com**

(435) 632-3667 / 1214 Zion Park Blvd. / Springdale, Utah

 @lafavezion