

LAFAVE LUXURY RENTALS GUIDE

LAFAVE



LUXURY RENTALS
AT ZION

“BEAUTY IS NOT CAUSED. **IT IS.**”

EMILY DICKINSON



ZION NATIONAL PARK
THE SUBWAY



ZION NATIONAL PARK
ANGELS LANDING



Condé Nast
Traveler

Named **best luxury
vacation rental
in Zion** by
Condé Nast

LAFAVE

LUXURY RENTALS AT ZION
BOOK AT LAFAVEZION.COM

LAFAVE LUXURY RENTALS

WHAT IS LAFAVE?

LaFave is more
than just a
luxury vacation
rental resort.

LaFave is a place where we have obsessed over the details.

It is a sanctuary where you may enjoy the beauty of Zion National Park right from your own private balcony.

It is a place to find refuge and recharge after a long day of touring the park.

It is quite simply the finest lodging in all of Zion.



LaFave is a work of love. We continue to build our dream here in Zion and take great joy in sharing this magical place with our guests.

We hope you enjoy what we have created.

LAFAVE

LUXURY RENTALS
AT ZION



LAFAVE SOUTH LUXURY POOL



LAFAVE SOUTH

LaFave is the
ultimate destination
for luxury
accommodations
while visiting Zion
National Park.

LaFave is recognized as the ultimate luxury lodging choice for visiting Zion National Park. For over 6 years, LaFave has provided the highest quality guest experience in Zion. We have the finest luxury villas, suites, and home rentals.

LaFave is located in Springdale, Utah, the gateway town into Zion. LaFave sits only 1 mile from the south entrance to the main Zion Canyon, and features a Zion shuttle stop directly in front of the property.



LaFave rental units are very spacious: the average suite size is 1252 sq ft. LaFave units feature modern design and brand-new full size kitchens with stainless appliances and quartz countertops. The units include a dining table, walk-in tile showers, washer/dryer, private bedrooms, and a living room. Each unit in the complex includes a private patio or deck with stunning views of the soaring red sandstone cliffs of Zion.



LAFAVE SOUTH
THE GALLERY HOUSE



LAFAVE SOUTH



LAFAVE SOUTH
MYSTERY FALLS VILLA



LAFAVE NORTH
JOHNSON MOUNTAIN VILLA



LAFAVE NORTH
JOHNSON MOUNTAIN VILLA



LAFAVE NORTH
VIRGIN RIVER VILLA



1 LAFAVE LUXURY RENTALS - Located in the heart of Springdale — gateway town to Zion

2 ZION NATIONAL PARK - 1 mile from LaFave

LAFAVE
LUXURY RENTALS
AT ZION

book at lafavezion.com / (435) 632-3667 / 1214 Zion Park Blvd. / Springdale, Utah

TABLE OF CONTENTS



LAFAVE LUXURY RENTALS GUIDE

- Property Map 18
- Accommodations 19
- Luxury Villas 20
- Luxury Suites 34
- Luxury Homes 38
- Amenities 48

SPRINGDALE INSIDERS GUIDE

- Shops & Galleries 55
- The Best Restaurants 62

LAFAVE



LUXURY RENTALS
AT ZION

LAFAVE NORTH	
BUILDING F - LUXURY VILLAS	Virgin River Villa Lava Point Villa Pine Creek Villa Big Springs Villa
BUILDING G - LUXURY VILLAS	Kayenta Villa Mount Kinesava Villa Weeping Rock Villa Johnson Mountain Villa The Sundial Suite
BUILDING H - LUXURY VILLAS	Cathedral Mountain Villa Meridian Tower Villa Phantom Valley Villa East Temple Villa

LAFAVE NORTH
1200
ZION PARK BLVD.

1 MILE
TO ZION

BUS STOP
DIRECTLY ACROSS
7 STREET



LAFAVE SOUTH
1214
ZION PARK BLVD.

LAFAVE SOUTH	
BUILDING A - LUXURY HOMES	West Temple House Bridge Mountain House The Gallery House (entire building)
BUILDING B - LUXURY SUITES	Zion Suite The Watchman Suite
BUILDING C - LUXURY VILLAS	Angels Landing Villa The Subway Villa Echo Canyon Villa Mystery Falls Villa
BUILDING D - LUXURY VILLAS	The Narrows Villa Emerald Pools Villa Checkerboard Mesa Villa Mountain of the Sun Villa
BUILDING E - LUXURY VILLAS	Hidden Canyon Villa Orderville Canyon Villa Kolob Arch Villa Northgate Peaks Villa
BUILDING E - LUXURY SUITES	The Sentinel Suite Temple of Sinawava Suite

ACCOMMODATIONS

PREMIER VILLAS

3 Bedroom / 3 Bath / Game Room

Sleeps 4-10

- 1848 sq ft

LaFave South

- Angels Landing Villa
- The Narrows Villa

LaFave North

- Virgin River Villa
- Cathedral Mountain Villa

SIGNATURE VILLA

3 Bedroom / 2 Bath

Sleeps 4-8

- 1712 sq ft

LaFave North

- Johnson Mountain Villa

GRAND VILLAS

2 Bedroom / 2 Bath / Game Room

Sleeps 4-8

- 1472 sq ft

LaFave South

- The Subway Villa
- Emerald Pools Villa

LaFave North

- Lava Point Villa
- Meridian Tower Villa

PREMIUM VILLAS

2 Bedroom / 2 Bath

Sleeps 2-6

- 1004 sq ft

LaFave South

- Echo Canyon Villa
- Mystery Falls Villa
- Checkerboard Mesa Villa
- Mountain of the Sun Villa

LaFave North

- Pine Creek Villa
- Big Springs Villa
- Phantom Valley Villa
- East Temple Villa

DELUXE VILLAS

2 Bedroom / 1 Bath

Sleeps 2-6

- 856 sq ft

LaFave South

- Orderville Canyon Villa
- Kolob Arch Villa
- Northgate Peaks Villa
- Hidden Canyon Villa

LaFave North

- Kayenta Villa
- Mount Kinesava Villa
- Weeping Rock Villa

LUXURY HOMES

3-6 Bedroom / 2-4 Bath

LaFave South

- Bridge Mountain House:
3 bedroom, 2 bath / **Sleeps 4-8** / 1308 sq ft
- West Temple House:
3 bedroom, 2 bath / **Sleeps 4-10** / 1920 sq ft
- The Gallery House:
6 bedroom, 4 bath / **Sleeps 8-16** / 3228 sq ft

LUXURY SUITES

1 Bedroom / 1 Bath

Premium:

- **Sleeps 2-4**
- 856 sq ft

Standard:

- **Sleeps 2-4**
- 772 sq ft

LaFave South

- The Sentinel Suite (Premium)
- Temple of Sinawava Suite (Premium)
- The Watchman Suite (Standard)
- Zion Suite (Standard)

LaFave North

- The Sundial Suite (Premium)



LUXURY VILLAS

LAFAVE



LUXURY RENTALS
AT ZION



LAFAVE NORTH
WEEPING ROCK VILLA

PREMIER VILLAS

3 Bedroom / 3 Bath / Game Room

Sleeps 4-10

- 1848 sq ft

LaFave South

- Angels Landing Villa
- The Narrows Villa

LaFave North

- Virgin River Villa
- Cathedral Mountain Villa



Description

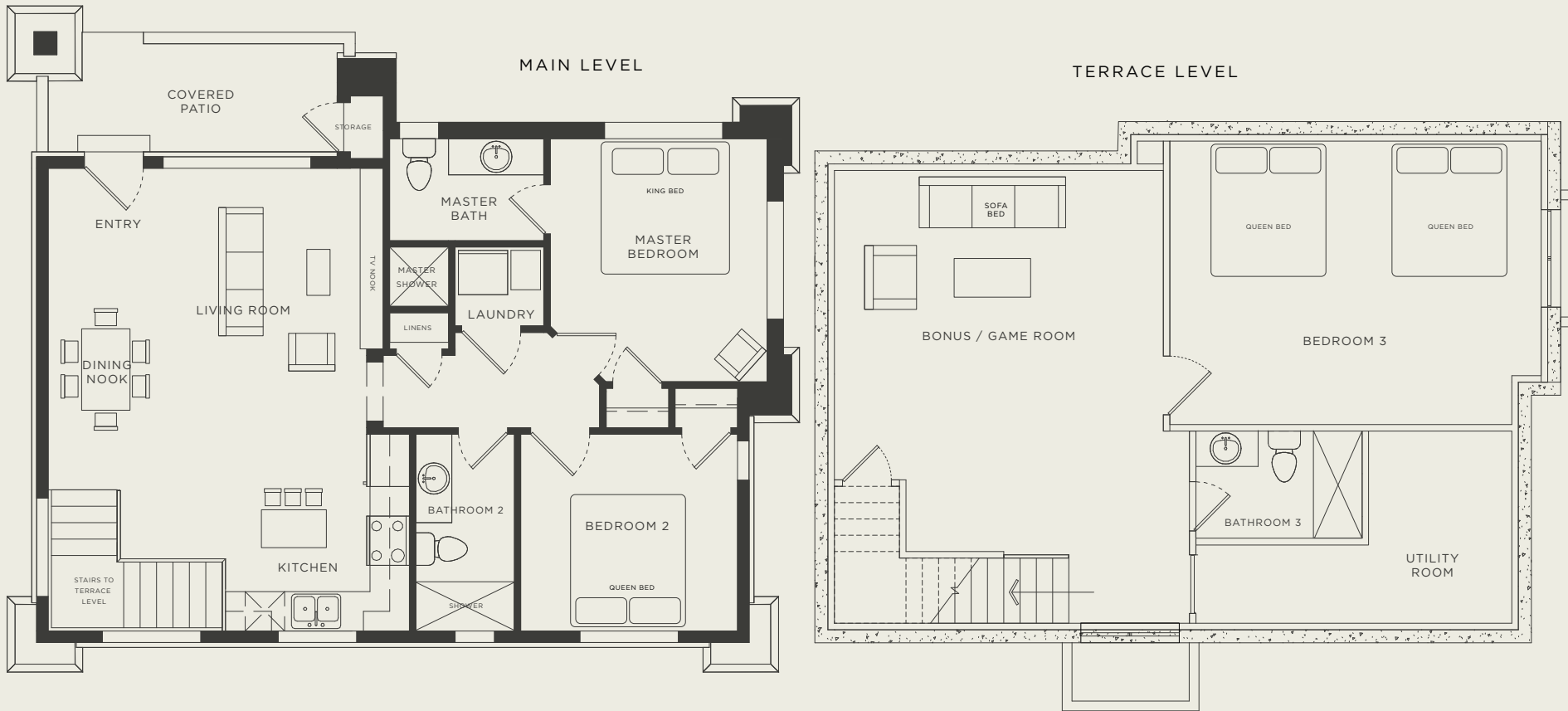
This three bedroom apartment style villa is the ultimate in spacious luxury for a group of friends or a family group. Includes 3 private bedrooms, 3 bathrooms, full size kitchen, dining table, walk-in tile showers, washer/dryer, a living room on the main level, plus a bonus/game room downstairs with a sofa bed. Includes a private patio with views. See amenities pages 116-120 for full list of LaFave offerings.



Premier Villa Floor Plan

3  BEDROOM	3  BATHROOM	1  KING BED	3  QUEEN BED	1  SOFA BED
---	--	--	---	--

1848 sq ft. / 4-10 capacity



Unit example shown: **The Narrows Villa**

Floor plans may vary slightly from unit to unit. To view specific unit floorplans visit LaFaveZion.com

SIGNATURE VILLA

3 Bedroom / 2 Bath

Sleeps 4-8

- 1712 sq ft

LaFave North

- Johnson Mountain Villa

**Description**

This three bedroom apartment style villa is regarded as perhaps the most beautiful unit in our complex. This villa offers spacious luxury for a group of friends or a family group. Includes 3 private bedrooms, 2 bathrooms, full size kitchen, dining table, walk-in tile showers, washer/dryer, and living room with a sofa bed. Includes 2 private covered decks with views of the Zion cliffs. See amenities pages 116-120 for full list of LaFave offerings.



Signature Villa Floor Plan

- 3**



BEDROOM
- 2**



BATHROOM
- 1**



KING BED
- 2**

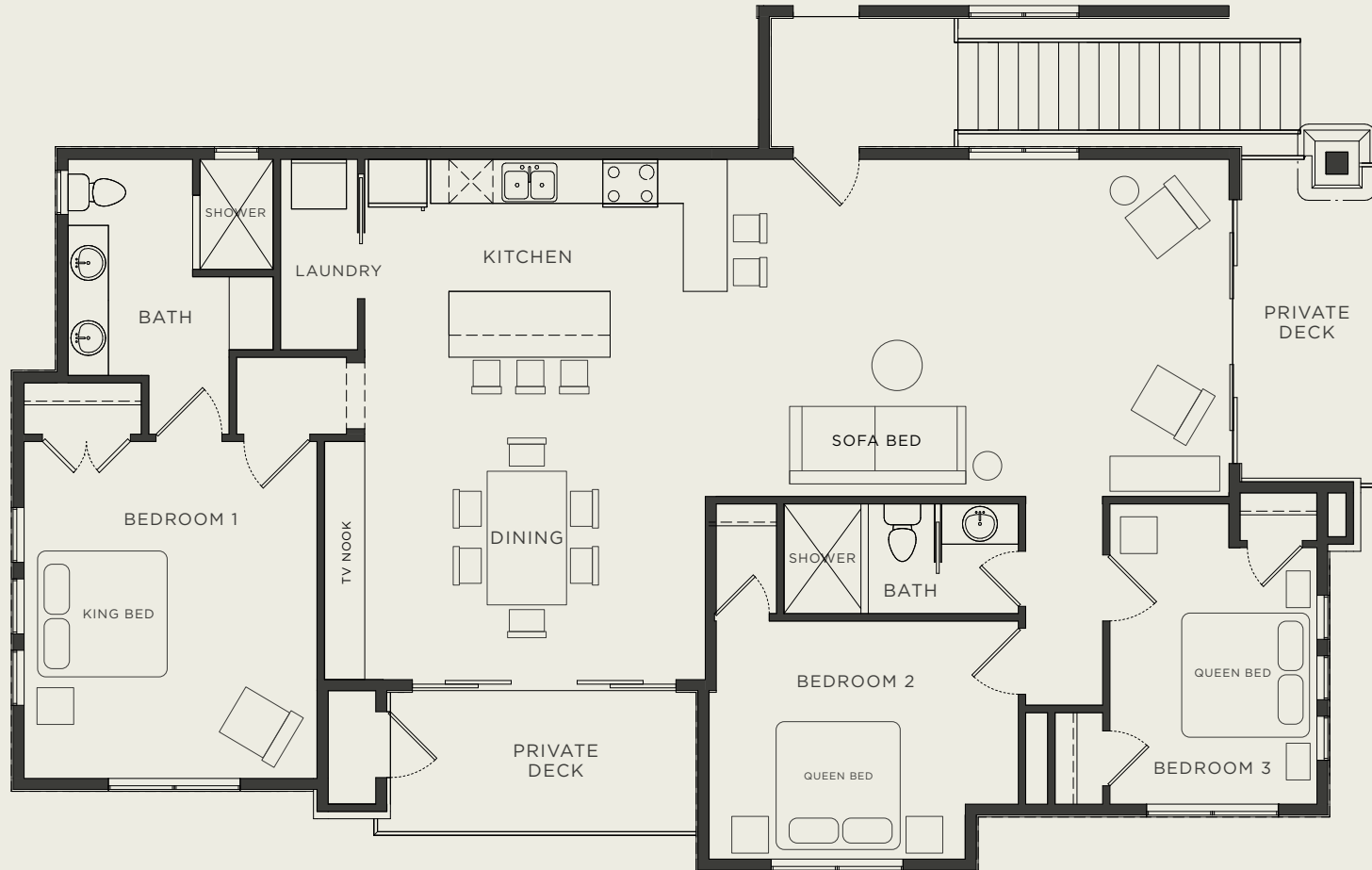


QUEEN BED
- 1**



SOFA BED

1712 sq ft. / 4-8 capacity



Floor plan: **Johnson Mountain Villa**

GRAND VILLAS

2 Bedroom / 2 Bath / Game Room

Sleeps 4-8

- 1472 sq ft

LaFave South

- The Subway Villa
- Emerald Pools Villa

LaFave North

- Lava Point Villa
- Meridian Tower Villa



Description

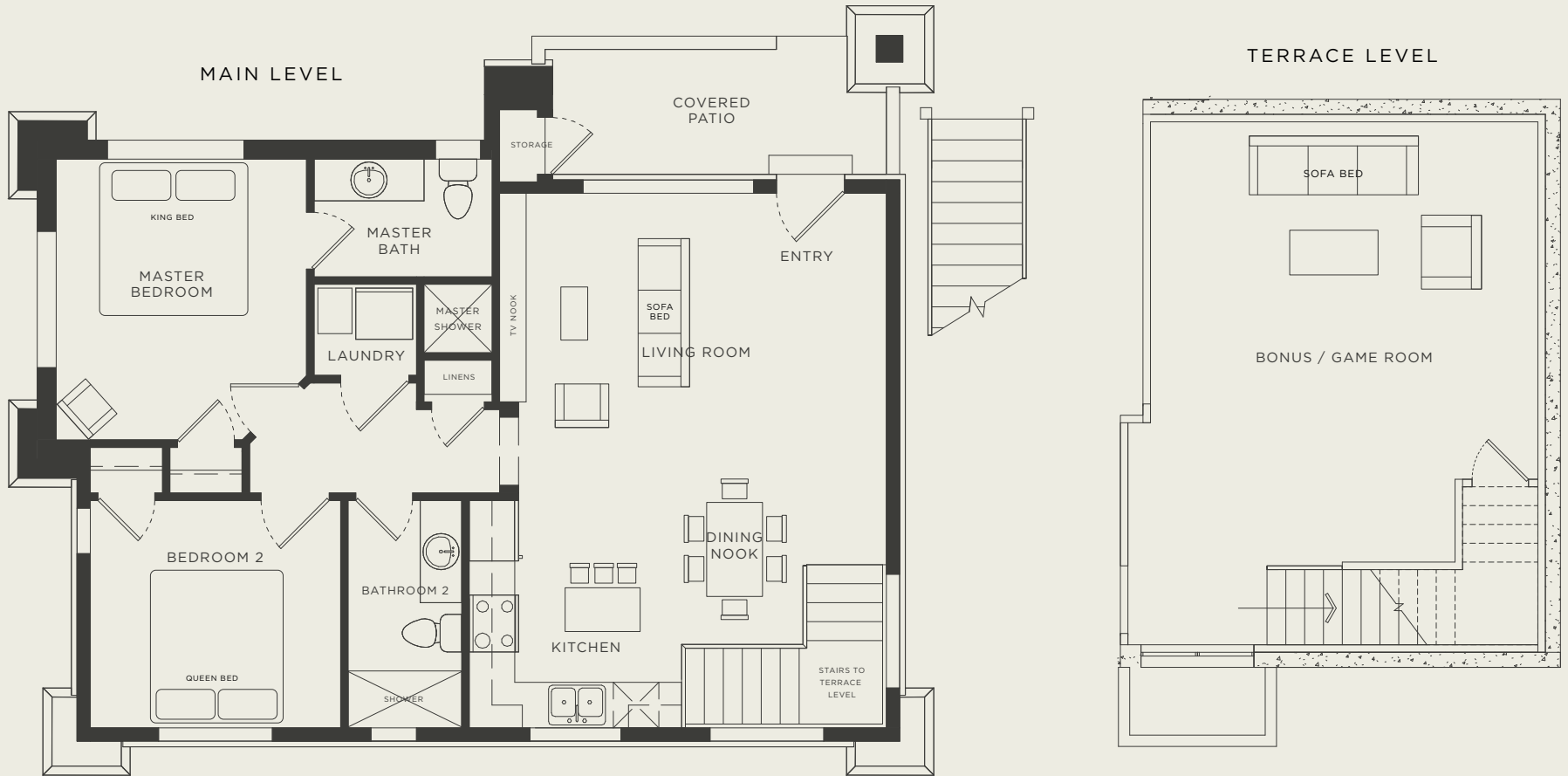
This two bedroom apartment style villa is geared for one to two couples, or a family group. Includes 2 private bedrooms, 2 bathrooms, full size kitchen, dining table, walk-in tile showers, washer/dryer, and living room on the main level with a sofa bed, plus a bonus/game room downstairs with a sofa bed. Includes a private patio with views. Please see amenities pages 116-120 for full list of LaFave offerings.



Grand Villa Floor Plan

2  **BEDROOM**
2  **BATHROOM**
1  **KING BED**
1  **QUEEN BED**
2  **SOFA BED**

1472 sq ft. / 4-8 capacity



Unit example shown: **The Subway Villa**

Floor plans may vary slightly from unit to unit. To view specific unit floorplans visit LaFaveZion.com

PREMIUM VILLAS

2 Bedroom / 2 Bath

Sleeps 2-6

- 1004 sq ft

LaFave South

- Echo Canyon Villa
- Mystery Falls Villa
- Checkerboard Mesa Villa
- Mountain of the Sun Villa

LaFave North

- Pine Creek Villa
- Big Springs Villa
- Phantom Valley Villa
- East Temple Villa



Description

This two bedroom apartment style villa is perfect for one or two couples, or a family. Includes 2 private bedrooms, 2 bathrooms, full size kitchen, dining table, walk-in tile showers, washer/dryer, and living room with sofa bed. Includes a private covered deck with amazing views. Please see amenities pages 116-120 for full list of LaFave offerings.

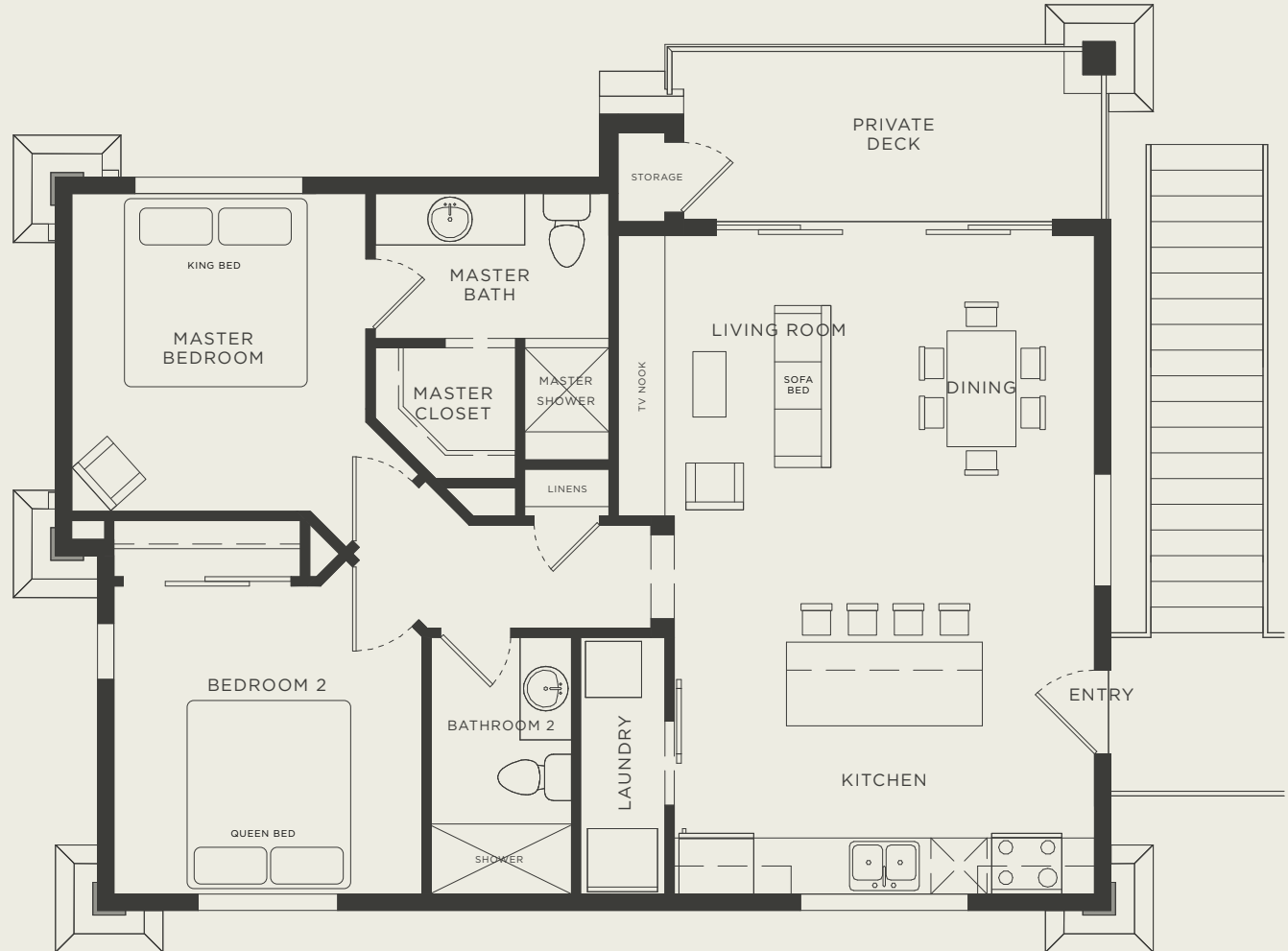


Premium Villa Floor Plan

2  **BEDROOM**
2  **BATHROOM**
1  **KING BED**
1  **QUEEN BED**
1  **SOFA BED**

1004 sq ft.

2-6 capacity



Unit example shown: **Echo Canyon Villa**

Floor plans may vary slightly from unit to unit. To view specific unit floorplans visit LaFaveZion.com

DELUXE VILLAS

2 Bedroom / 1 Bath

Sleeps 2-6

- 856 sq ft

LaFave South

- Orderville Canyon Villa
- Kolob Arch Villa
- Northgate Peaks Villa
- Hidden Canyon Villa

LaFave North

- Kayenta Villa
- Mount Kinesava Villa
- Weeping Rock Villa

**Description**

This two bedroom apartment style villa is perfect for one or two couples, or a family. Includes 2 private bedrooms, 1 bathroom, full size kitchen, dining table, walk-in tile showers, washer/dryer, and living room with sofa bed. Includes a private covered deck or patio with views. Please see amenities pages 116-120 for full list of LaFave offerings.

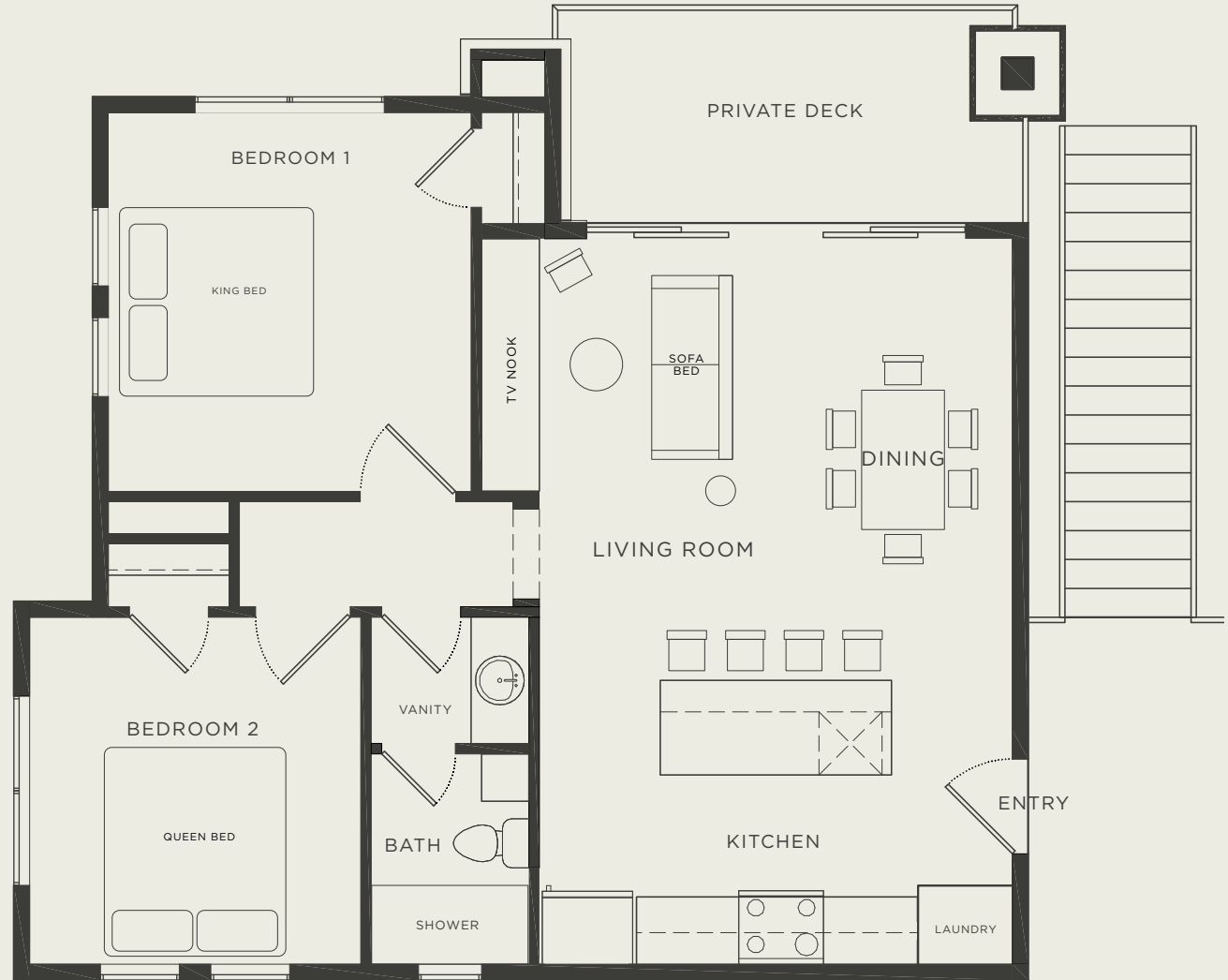


Deluxe Villa Floor Plan

2  **BEDROOM**
1  **BATHROOM**
1  **KING BED**
1  **QUEEN BED**
1  **SOFA BED**

856 sq ft.

2-6 capacity



Unit example shown: **Orderville Canyon Villa**

Floor plans may vary slightly from unit to unit. To view specific unit floorplans visit LaFaveZion.com



LAFAVE SOUTH
HIDDEN CANYON VILLA



LAFAVE NORTH
JOHNSON MOUNTAIN VILLA

LUXURY SUITES

LAFAVE



LUXURY RENTALS
AT ZION



LAFAVE NORTH
THE SUNDIAL SUITE

LUXURY SUITES

1 Bedroom / 1 Bath

Premium: **Sleeps 2-4**

- 856 sq ft

Standard: **Sleeps 2-4**

- 772 sq ft

LaFave South

- The Sentinel Suite (Premium)
- Temple of Sinawava Suite (Premium)
- The Watchman Suite (Standard)
- Zion Suite (Standard)

LaFave North

- The Sundial Suite (Premium)






Description

This one bedroom apartment style suite with all the comforts of home is great for a couple or small family. Includes a private bedroom, full kitchen, dining table, walk-in tile shower, washer/dryer, and living room with sofa bed. Enjoy a private patio or deck with amazing Zion views. Please see amenities pages 116-120 for full list of LaFave offerings.

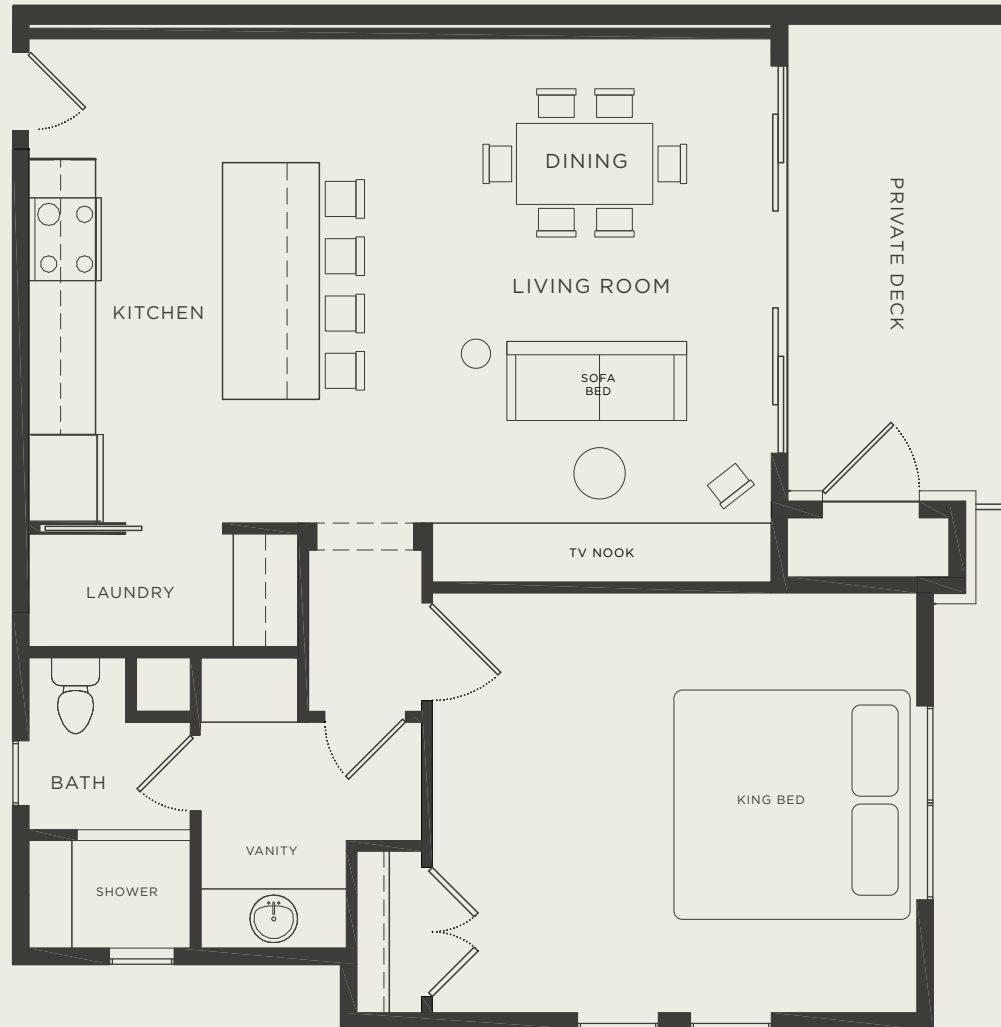


Luxury Suite Floor Plan

<p>1</p>  <p>BEDROOM</p>	<p>1</p>  <p>BATHROOM</p>
<p>1</p>  <p>KING BED</p>	<p>1</p>  <p>SOFA BED</p>

772-856 sq ft.

2-4 capacity



Unit example shown: **The Sentinel Suite**

Floor plans may vary slightly from unit to unit. To view specific unit floorplans visit LaFaveZion.com

LUXURY HOMES

LAFAVE



LUXURY RENTALS
AT ZION



LAFAVE SOUTH
BRIDGE MOUNTAIN HOUSE

LUXURY HOMES

3 Bedroom / 2 Bath

Sleeps 4-10

- 1920 sq ft

LaFave South

- West Temple House

**Description**

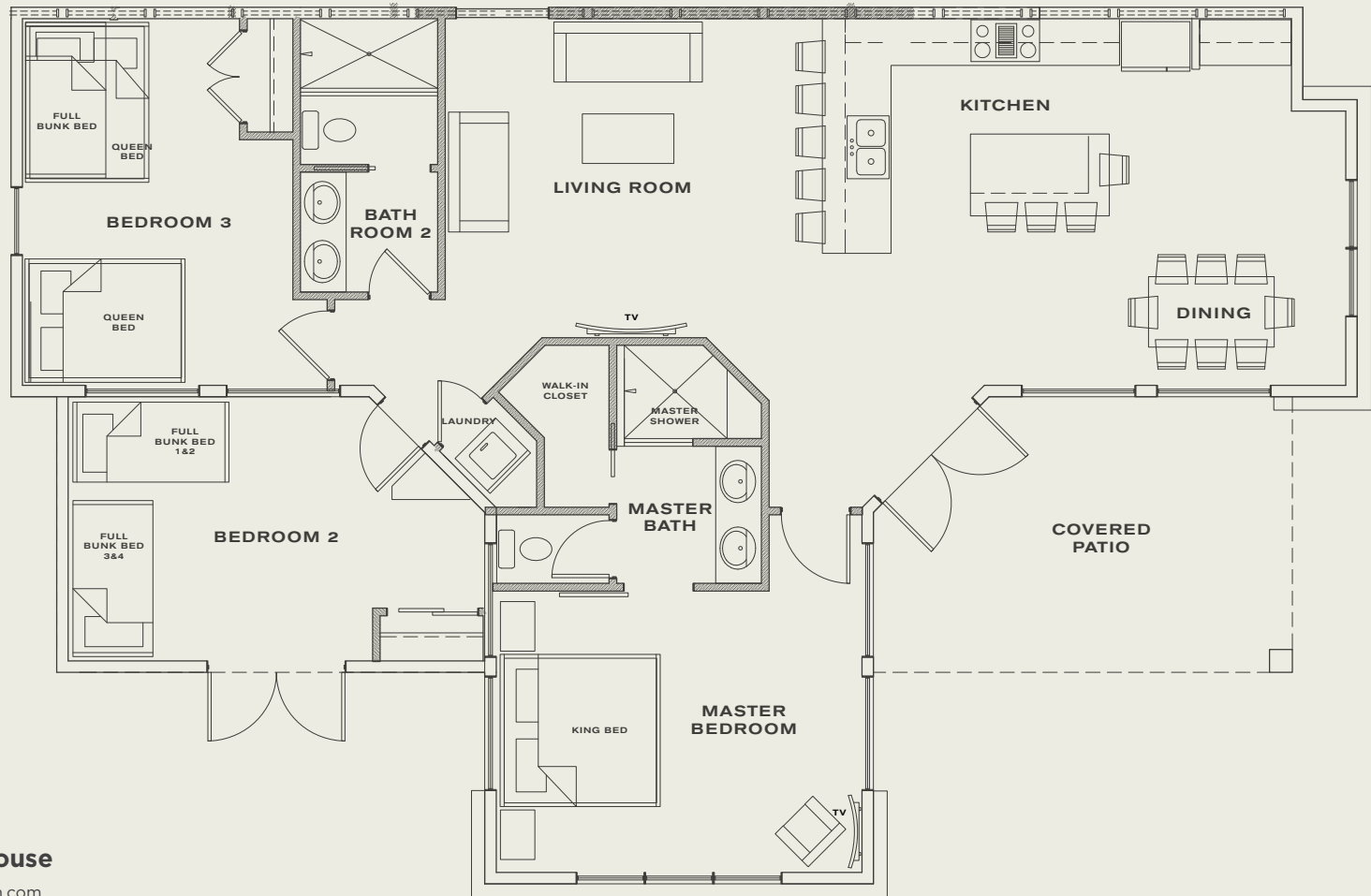
The West Temple House has 3 bedrooms with 8 beds that can sleep 10 guests. It has 2 full bathrooms and a luxury full kitchen with stainless Bosch appliances and quartz countertops. Includes a dining table, walk-in tile showers, washer/dryer, and living room. This house is the nicest place to stay in Zion that can hold a large group and it is located in the heart of Springdale — 1 mile from the entrance to Zion. Please see amenities pages 116-120 for full list of LaFave offerings.



West Temple House Floor Plan

3  **BEDROOM**
2  **BATHROOM**
1  **KING BED**
2  **QUEEN BED**
5  **FULL BED**

1920 sq ft. / 4-10 capacity



Floor plan: **West Temple House**

To view all unit floorplans visit LaFaveZion.com

LUXURY HOMES

3 Bedroom / 2 Bath

Sleeps 4-8

- 1308 sq ft

LaFave South

- Bridge Mountain House

**Description**

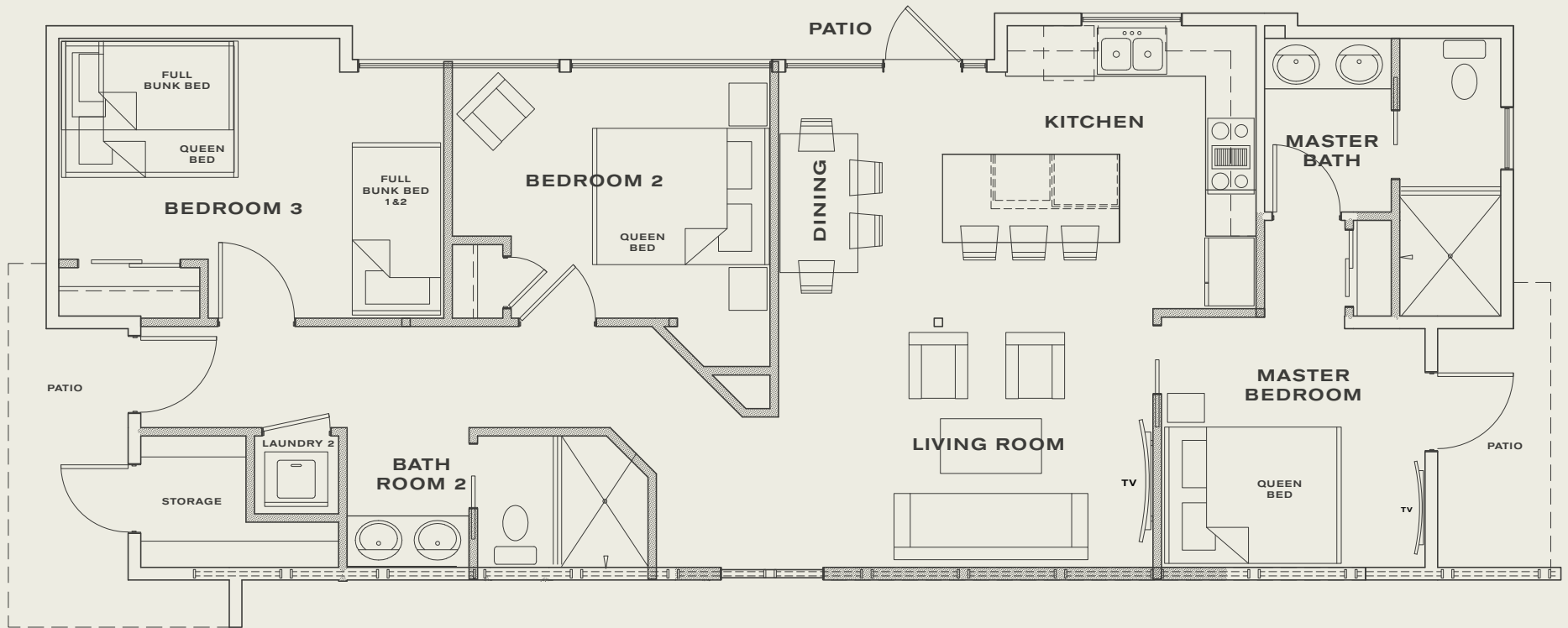
The Bridge Mountain House has 3 bedrooms with 6 beds that can sleep 8 people. It has 2 full bathrooms, a luxury full kitchen with stainless Bosch appliances and quartz countertops. Includes a dining table, walk-in tile showers, washer/dryer, and living room. Please see amenities pages 116-120 for full list of LaFave offerings.



Bridge Mountain House Floor Plan

3  **BEDROOM**
2  **BATHROOM**
3  **QUEEN BED**
3  **FULL BED**

1308 sq ft. / 4-8 capacity



Floor plan: **Bridge Mountain House**

To view all unit floorplans visit LaFaveZion.com

LUXURY HOMES

6 Bedroom / 4 Bath

Sleeps 8-16

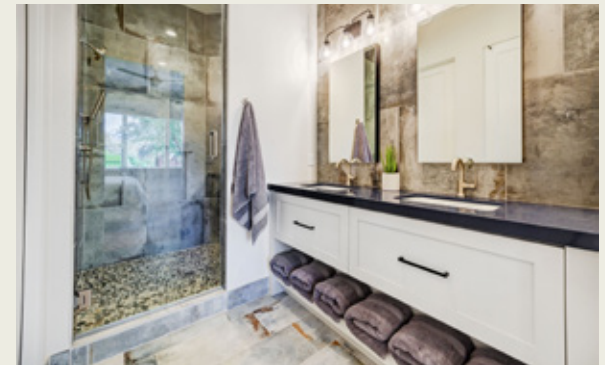
- 3228 sq ft

LaFave South

- The Gallery House

**Description**

Made by combining the West Temple House and the Bridge Mountain House together, this 6 bedroom home was converted from the former LaFave art gallery. It is simply the nicest home to rent in Zion—you will not find a better house closer to the park entrance. No expense was spared in this stunner, with top of the line finishes, appliances and beds. For those who want the ultimate in lodging while visiting Zion, this is it. This house is loaded with amenities. Please see amenities pages 116-120 for full list of LaFave offerings.



The Gallery House Floor Plan

6 4
 
BEDROOM **BATHROOM**

1 5 8
  
KING BED **QUEEN BED** **FULL BED**

3228 sq ft.

8-16 capacity



Floor plan: **The Gallery House**

To view all unit floorplans visit LaFaveZion.com

REVIEWS



“LaFave exceeded expectations. Honest, friendly, and informative. They gave us great advice of what to see. And our villa was so amazing! Large modern rooms, very clean upon arrival, the kitchen was fully stocked, plus really nice beds.”



“Best vacation rental we’ve ever stayed in.”



“Literally the most amazing place to stay I have ever been in. Gorgeous views from every room, including the master bath. Amazingly decorated. Spotless. Every detail, from the decor to the coffee cups was matching and stylish and perfect. The beds are incredibly comfortable and I would like the person that bought the pillows and beds and sheets to send me a list of everything they bought and then come decorate my house. The hot tub and pool are great and clean and we loved sitting in the hot tub after a day of hiking. Close to everything, we walked to the grocery store and to dinner. Right across from a town shuttle stop. Good set of games for the family. Friendly and kind staff. Cute welcome snacks and drinks.
Honestly, if I could stay here forever, I would.”



“LaFave really knows what they’re doing. The villa and complex are new, clean and well maintained; it has every amenity we could ask for like toiletries in the bathrooms, coffee & tea in the kitchen & laundry pods. I had a few questions while there and the host responded immediately, even in the evening. There’s a welcome pack of snacks and a book explaining everything to do in town and inside the park. The location was phenomenal, across the street from a gift shop and liquor store, multiple bars, coffee shops, and restaurants. The sunset over the canyon from the hot tub was beautiful.”



“Super-clean rooms.”



“LaFave is the perfect base camp for visiting Zion. We will for certain come again.”



LAFAVE NORTH
VIRGIN RIVER VILLA

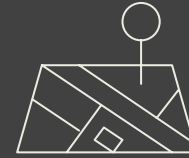
LAFAVE AMENITIES



**LUXURY POOL
& HOT TUB**



**XL SUITES:
1252 SQ FT AVG
SIZE UNIT**



**1 MILE
FROM ZION
ENTRANCE**



**ZION BUS
STOP DIRECTLY
IN FRONT**



**CONTACTLESS
CHECK-IN**
(we send you a door code)



**FULL-SIZE
KITCHEN**



**WASHER &
DRYER**



**WALKING DISTANCE
TO 5 RESTAURANTS**



**PRIVATE OUTDOOR
DECK/PATIO WITH
GRILL**



**WIRELESS
INTERNET &
SMART TVS**



**FREE
PARKING**



**KEURIG
COFFEE
MACHINE**

AMENITIES



LaFave is luxury: you can recharge at LaFave after a long day of touring in Zion. Many of our guests have commented, “This is the nicest vacation rental we have ever stayed in.”

LOCATION

- Close to the main Zion south entrance (only 1 mile away)
- Free Zion bus shuttle stop directly in front of LaFave: no Zion parking worries. Leave your car parked for free at LaFave.
- Easy walking distance to 5 great restaurants
- State liquor store is across the street

INTERIOR DESIGN

- Extra large suites: the average hotel room is 330 sq ft — the average LaFave suite size is 1252 sq ft
- Modern design/furnishings: suites feel fresh, nice, and new
- Patio or deck with every unit + outdoor cooking grill
- Private bedrooms and open living rooms in all our suites
- Luxurious walk-in tile showers with European glass doors in our Villas & Luxury Homes
- Many large windows and high ceilings make our units feel light and airy
- Plush towels, hair dryer, shampoo, conditioner, soap
- High-quality mattresses and luxury linens

CHEF-READY FULL KITCHENS

- Full kitchen: oven, refrigerator, dishwasher, microwave; stainless Bosch appliances featured in our Villas & Luxury Homes
- Kitchen is fully stocked for cooking (full set of pans, cookware, utensils, dinnerware, etc.)
- Chef-ready kitchens include basic cooking supplies (olive oil, balsamic, spices)
- Dazzling quartz island bar/counters; custom cabinetry
- Dining table in every unit

LUXURY SERVICES

- Luxury pool and hot tub
- Contactless check-in (we send you a door code)
- Full size washer/dryer in every unit + laundry pods
- Keurig machine with Starbucks coffee, teas & hot chocolate
- Wireless Internet
- Smart TV's in every unit
- Brita filtered water



LAFAVE NORTH
JOHNSON MOUNTAIN VILLA



KITCHEN:

Coffee / Drinks

- Keurig coffee maker
- Starbucks pods
- Herbal tea selection & hot chocolate
- Sweetener and creamer
- Coffee mugs
- Filtered water

Kitchen Tools / Utensils

- Outdoor grill
- Full set of dishes & glasses
- Full set of pots & pans + cookware
- Toaster
- Blender
- Full set of utensils
- Full knife set & cutting boards
- Mixing bowls
- Pyrex containers

Cooking Oils / Spices

- Olive oil
- Balsamic vinegar
- Salt & Pepper
- Large variety of spices

Kitchen Cleaning / Soaps

- Kitchen dishtowels
- Dishwasher pods (dishwasher soap)
- Kitchen sponge (brand-new w/ each stay)
- Dish soap
- Paper towels



BATHROOM:

- Bath towels, washcloths, hand towels
- Shampoo, conditioner, body wash, hand soap
- Lotion
- Hair dryer
- Clothes steamer
- Kleenex and toilet paper



WASHER/DRYER:

- Tide pods (laundry soap) & dryer sheets



WIFI/ENTERTAINMENT:

- WiFi: Login & password located on refrigerator
- Smart TV to access your own streaming account e.g. Netflix, Amazon Prime Video, Disney+, Hulu, YouTube, YouTube TV, etc.
- A few board games are also included in each suite for your enjoyment



LAFAVE NORTH
CATHEDRAL MOUNTAIN VILLA



ZION NATIONAL PARK
THE NORTH POLE LOG, THE SUBWAY

SPRINGDALE UTAH

INSIDERS GUIDE

SPRINGDALE UTAH OVERVIEW



Springdale Utah serves as the gateway to Zion National Park.



Springdale has a rich history going back to 1862 as members of the Church of Jesus Christ of Latter-day Saints (Mormons) settled here and forged a difficult existence out of the wilderness. Life was hard—but rewarding. Eventually outsiders came to behold the beauty of this awe-inspiring place. Zion was formed as a national monument in 1909.



Springdale was named one of the 20 “prettiest towns” in the U.S. by Forbes Traveler. Come see the charm of this magic little town next to Zion.

Springdale has the full amenities of a resort town with numerous restaurants, brew pubs, and coffee joints — along with many shops and art galleries. It is a walking town and sports wide-open sidewalks, which encourage the visitors to stroll the town and explore.

SPRINGDALE UTAH OVERVIEW

Springdale is a city of the arts and music — with many art galleries, shops, and a large music festival each fall that draws thousands of visitors.

Springdale is the perfect base camp for your Zion trip. LaFave is located in the heart of Springdale, and sits 1 mile from the south Zion National Park entrance. LaFave features a free Zion shuttle stop directly in front of the property.



As you walk around town, gaze up at the Zion Canyon monoliths that rise 3,800 feet above the town.



LaFave Luxury Rentals, Springdale Utah.

SPRINGDALE UTAH OVERVIEW

Springdale stands out in the desert as an oasis of beauty. With the clean waters of the Virgin River flowing through the center of town, there is an abundance of water and greenery. Springdale looks like a ribbon of emerald green in contrast to the bright red walls of Zion Canyon that surround the town.

SHOPS & GALLERIES

SPRINGDALE UTAH GUIDE

ART GALLERIES	SHUTTLE STOP	PHONE
Worthington Gallery	4	435-772-3446
David J West Photography	4	435-772-3510
DeZion Gallery	5	435-772-6888
Sorella Gallery	5	435-772-0622
Tribal Arts Zion	2	435-772-3353
JEWELRY & BOUTIQUES	SHUTTLE STOP	PHONE
Zion Canyon Offerings	5	435-772-3456
Silver Bear Enterprises	8	435-212-4797
Tribal Arts Zion	2	435-772-3353
GIFT SHOPS	SHUTTLE STOP	PHONE
Switchback Trading Co.	6	435-772-3700
Springdale Visitor Center	6	435-429-1555
Zion Canyon Offerings	5	435-772-3546
Bumbleberry Gift Shop & Bakery	5	435-429-7199
Simply Birkenstock	5	435-772-3500
Shirt Off My Back	5	435-649-4054
Hoodoos General Store	3	435-772-3101
Trailhead Gifts & Gear	1	435-772-2420
Zion Forever Bookstore & Gift	1	435-772-3264
ROCK & GEM SHOPS	SHUTTLE STOP	PHONE
Zion Rock & Gem	7	435-772-3436
Silver Bear Enterprises	8	435-212-4797
PET BOARDING	SHUTTLE STOP	PHONE
Canyon Paws	Rockville	435-703-6680



GROCERY & HARDWARE	SHUTTLE STOP	PHONE
Sol Foods Supermarket	5	435-772-3100
Sol Foods Hardware	5	435-772-3100
Hoodoos General Store	3	435-772-3101
Happy Camper Market	1	435-772-7805
COFFEE & LIQUOR	SHUTTLE STOP	PHONE
Deep Creek Coffee Company	5	435-669-8849
Canyon Coffee	2	435-216-0711
Perks at Zion Espresso	1	435-772-0529
Switchback State Liquor Store	6	435-772-3700
BAKERY, ICE CREAM, CANDY	SHUTTLE STOP	PHONE
Springdale Candy Co. (+ ice cream)	5	435-772-0485
Bumbleberry Ice Cream/Bakery	5	435-429-7199
Farmstead Bakery (opens 2024)	5	435-986-7777
Hoodoo's Market (+ ice cream)	3	435-772-3101
OUTDOOR OUTFITTERS	SHUTTLE STOP	PHONE
Zion Adventure Company	3	435-772-1001
Zion Guru	6	435-632-0432
Zion Outfitter	1	435-772-5090
Zion Mountaineering School	5	435-319-0313
Zion Guide Hub	5	435-414-8040
GEAR & CLOTHING	SHUTTLE STOP	PHONE
Zion Outdoor Gear & Clothing	5	435-772-0630
Canyon Outfitters	5	435-772-0252

Springdale might be a small national park town, but it punches above its weight when it comes to inspiring cuisine.



Home to gastronomy more likely to be found in Chicago than in a small Utah town, Springdale hosts a wide variety of great restaurants.



Stick with our restaurant guide and you can't go wrong.



The
restaurants
on our list
are the
best ones
in town.

Similar to our hiking guide which presents only the best hikes in Zion, our LaFave restaurant guide does the same. Rather than give an exhaustive list of ALL of the restaurants in Springdale, we are only going to present you with the best options. There will be some who disagree with our curated list — but these are the places that we actually eat at time and time again.



Springdale restaurants have been known to be “hit or miss”— here we give you all the hits (and skip the potential misses). So with the mock-pretentious air of a Michelin reviewer, we give you our unbiased opinions on where to find the best food while visiting Zion.

NOTE: All companies featured in our guide (including restaurants) are independently selected. If you purchase anything through these companies we do not receive commissions.



THE BEST RESTAURANTS

Please check all restaurants for seasonal closings and specific hours they open/close. Springdale restaurants have hours of operation that vary widely throughout the year.

RESTAURANT	OUR RATING	HOURS	LOCATION	DISTANCE FROM LAFAVE	FOOD	DESCRIPTION
Bit N' Spur Restaurant & Saloon	★★★★★	Dinner 5:00pm - 10:30pm	(435) 772-3498 1212 Zion Park Blvd	Walking distance Sits between LaFave North and South properties	Southwestern grill & Americana along with Southern Utah's largest selection of micro-brews and fresh fruit margaritas.	Perhaps the most popular place in town. Great food, even better atmosphere, and excellent service. Favorite watering hole and gathering place for locals and visitors for many decades. You can't go wrong here — their food is delicious and they have a great outdoor dining area behind the restaurant along with an outdoor taco shop.
Wild Thyme	★★★★★	Lunch & Dinner 11:30-9pm	(435) 772-9311 2501 Zion Park Blvd	1.7 miles to the south (3 minute drive from LaFave)	Southwestern Bistro	Offers high quality beef, fish and chicken dishes, including gluten-free entrees, with ample selections for vegans and vegetarians. Their chefs focus on local Southwestern flavors. They cook in small batches in a scratch kitchen, using ingredients from their own organic gardens, including one on site. Offers an amazing outdoor eating location in the lawn with direct Zion views.
The Spotted Dog	★★★★★	Breakfast 7am-10:30am Dinner 5pm - 9pm	(435) 292-8487 428 Zion Park Blvd	1 mile to the north (2 minute drive from LaFave)	A casual American Bistro with cozy art-filled dining rooms and a European-style sidewalk café. Cuisines are handcrafted using fresh local produce, hormone-free meats and sustainably harvested fish. Massive wine cellar with endless varieties to choose from.	The Spotted Dog is one of our favorite places in town for dinner. Almost everything is good here and especially their salads, trout, and lamb. Largest wine list in town
Switchback Grille	★★★★★	Dinner 5pm - 9pm	(435) 772-3700 1149 Zion Park Blvd	Walking distance 75 yards to the east of LaFave (directly across the street)	The canyon's original prime steak and fresh seafood house. USDA Prime beef is hand-selected and aged 28 days. Filet mignon, New York Strip, rib eye are featured. Seafood is flown in fresh several times each week. Fresh halibut, sushi-grade Ahi, Alaskan king crab and jumbo shrimp. Extensive wine list rated 90 points and above.	High-end steakhouse. Amazing steaks, fish and shellfish. The Switchback is on the more expensive side, but very tasty. Their scallops are great and their filet mignon ranks with the best of them. If you enjoy lamb then try their amazing rack of lamb.
King's Landing Bistro	★★★★★	Dinner 5pm - 9pm	(435) 772-7422 1515 Zion Park Blvd	Walking distance 5 minutes easy stroll down Highway 9 or a 1-minute drive by car from LaFave.	American restaurant featuring steaks, salads, chicken, burgers, and general high-end fare.	A serious foodie place. A destination for those who enjoy fine cuisine. King's Landing features foods you won't find elsewhere around here. Dishes range from bone marrow to charred Spanish octopus to Bison Carpaccio. They offer a beautiful deck area in back to eat outside and watch the orange sunset glow off The Watchman Mountain. A favorite.

THE BEST RESTAURANTS

RESTAURANT	OUR RATING	HOURS	LOCATION	DISTANCE FROM LAFAVE	FOOD	DESCRIPTION
Dulivia Italian Restaurant	★★★★★	Dinner 5pm - 9pm	(435) 772-3700 1149-D Zion Park Blvd	Walking distance 75 yards to the east of LaFave (across the street)	Zion Canyon's first scratch Italian restaurant featuring a classic Italian menu. Chef Miguel Aliaga heads the kitchen and brings a wealth of culinary experience. For several years Chef Aliaga lived and worked in Italy where he refined his understanding of classic Italian cooking.	Springdale's best Italian restaurant. It offers great antipasta, charcuterie and home made Italian pasta. The Italian Classics menu is also a favorite.
Whiptail Grill	★★★★★	Lunch & Dinner Noon-9pm	(435) 772-0283 445 Zion Park Blvd	1 mile to the north (2 minute drive from LaFave)	Mexican food along with burgers, salads, sandwiches and wraps.	Don't let the exterior décor fool you! Yes, this restaurant was converted from an old gas station, but the Whiptail Grill has some of the highest quality food in town. Great lunch spot. The Whiptail has amazing salads—get their salad as your side dish with whatever you order. Especially tasty are the grilled shrimp tacos and the mahi-mahi tacos. Their Whiptail Burrito is so large it can feed two people.
Oscar's Cafe	★★★★☆	Breakfast, Lunch, & Dinner (7am-9pm)	(435) 772-3232 948 Zion Park Blvd	0.4 miles to the north of LaFave on Highway 9	Mexican and American food. Tasty burgers and sandwiches.	Very popular place. A favorite of locals and tourists for many years. Great food. Oscars is the go-to spot for many hungry visitors to Zion.
Jack's Sports Grill	★★★★	Lunch & Dinner Noon-9pm	(435) 772-3700 1149 Zion Park Blvd	Walking distance 75 yards to the east of LaFave (directly across the street)	Burgers, BBQ, salads, and other American food in a contemporary venue with a sports bar and multiple TV's.	Nice little eatery directly across the street from LaFave when you are looking for a quick, good meal without a lot of fanfare. The bar features a broad selection of drinks with sports playing on multiple screens at all times. Food is good and served fast. Good option for a quick bite to eat.

COFFEE & LIQUOR STORE

COFFEE & LIQUOR	HOURS	LOCATION	DISTANCE FROM LAFAVE	DESCRIPTION
Deep Creek Coffee Company	6am - 2pm	(435) 669-8849 932 Zion Park Blvd #3	0.4 miles to the north of LaFave on Highway 9	Deep Creek is considered the best coffee in town and where all the locals go. Offers pastries and simple breakfast fare.
Switchback State Liquor Store	12- 7pm (closed Sun)	(435) 772-3700 1149 Zion Park Blvd	Walking distance 75 yards to the east of LaFave (directly across the street)	The only liquor store within 40 miles of Springdale happens to be directly across the street from LaFave. Switchback Liquor features Springdale's only wine, liquor and full strength beer retail outlet. Excellent selection of wines from around the world with special emphasis on California varietals. Liquor inventory ranges widely as well, and includes a very nice assortment of value and premium products. Stocks a broad variety of full strength beer choices.

RESTAURANT LOCATIONS

RESTAURANTS	SHUTTLE STOP	PHONE
Bit N' Spur Restaurant & Saloon	6	435-772-3446
Wild Thyme	9	435-772-9311
The Spotted Dog	3	435-292-8487
Switchback Grille	6	435-772-3700
King's Landing Bistro	7	435-772-7422
Dulivia Italian Restaurant	6	435-772-3700
Whiptail Grill	3	435-772-0283
Oscar's Cafe	5	435-772-3232
Jack's Sports Grill	6	435-772-3700
COFFEE & LIQUOR		
	SHUTTLE STOP	PHONE
Deep Creek Coffee Company	5	435-669-8849
Switchback State Liquor Store	6	435-772-3700

SPRINGDALE RESTAURANT GUIDE





"It's not what you look at that matters, it's what you see." - Henry David Thoreau

ZION NATIONAL PARK
OBSERVATION POINT



LAFAVE SOUTH LUXURY POOL



LAFAVE SOUTH
TEMPLE OF SINAWAVA SUITE

LAFAVE: HERITAGE OF THE LAND

On our property at LaFave, we have a well-kept pioneer stone corral that runs along our property boundary. We have preserved this piece of history as a way to honor these early settlers.

The land around Zion has a rich history. At LaFave, we are proud that our property carries a heritage of the rugged American West and pioneer spirit.

In 1862, the early pioneers of Zion carved a difficult existence out of the desert landscape with few tools and materials.

Before there was barbed wire fencing, the pioneers of Utah would construct stone corrals to contain their animals. In several of the national parks in Utah, you may still see remnants of these early stone fences.

**EARLY PIONEER STONE CORRAL
CONSTRUCTED BY HAND THAT LIES
ON THE LAFAVE PROPERTY**



ZION NATIONAL PARK
THE SUBWAY



LAFAVE NORTH
JOHNSON MOUNTAIN VILLA



LAFAVE SOUTH POOL & HOT TUB




AMAZING ZION VIEWS FROM THE LAFAVE NORTH GROUNDS

LAFAVE



LUXURY RENTALS
AT ZION





Zion, brimming with a charismatic larger-than-life vibe, can do the theater of the grand: its vistas, canyon walls, and sandstone monoliths challenge anything on this planet for its vast scale and beauty.

But Zion can also touch you in its intimacy: a small flower sprouting after a summer rain, a spring seeping out of the Navajo sandstone to bring life to the desert, or a hidden alcove containing artifacts from the early inhabitants dating 1000 years ago.

This is why Zion is so beloved — it can show us scale so vast that it's almost incomprehensible — yet on an intimate level it can move us.

LAFAVE LUXURY RENTALS
WEST TEMPLE HOUSE



WEST TEMPLE MOUNTAIN

Zion National Park
Rises 3,900 ft above LaFave

LAFAVE SOUTH

LAFAVE NORTH

LAFAVE PROPERTIES, SPRINGDALE UTAH

L A F A V E



L U X U R Y R E N T A L S
A T Z I O N

LaFaveZion.com / (435) 632-3667

L A F A V E S O U T H: 1214 Zion Park Blvd. Springdale, Utah

L A F A V E N O R T H: 1200 Zion Park Blvd. Springdale, Utah

 @lafavezion

book at **lafavezion.com**